



ECLIPSE Ni/Ci

Upright Microscope
for Research



Shedding New Light On **MICROSCOPY**

See the evolution

The ECLIPSE Ni series, the ultimate in upright biological microscope evolution, supports bioscience studies with enhanced basic performance and flexible system expandability.

The CFI Plan Apochromat Lambda series objectives are the key to the series' optical performance. Nano Crystal Coat, with its ultra-low refractive index, is employed for the first time in microscope objectives, providing brighter, high-resolution and high-contrast microscopy images.

Nikon's proprietary stratum structure allows various combinations of additional components to be installed. Applications using fluorescent proteins, such as Kaede and PA-GFP, are possible with the addition of a two-tiered fluorescent unit and a photoactivation unit.

The Ni series transcends the concept of conventional upright microscopes and expands the possibilities of advanced research in fields such as bioscience and medicine.

The ECLIPSE Ci series is a compact research microscope which has highly functional and user-friendly features. Nikon provides a wide variety of research microscopes, including for shared use at research facilities and for personal use at laboratories.

Ni

■ System expandability

- Nikon's proprietary stratum structure enables efficient system construction.
- The numerous accessories can be custom combined depending upon application.

■ Optical performance

- CFI Plan Apochromat Lambda objectives with chromatic aberration correction and high transmission throughout a broad range of wavelengths
- Objectives with improved transmission in near-IR wavelength range for multiphoton excitation imaging

■ Design

- 3D ergo design combines functionality with sophistication.

■ Operability

- Ni-E: Motorized model with automatic change of observation conditions and adjustment of microscope accessories.
- Ni-U: Manual model with some motorized options.
- Most microscope controls can be operated with easy-to-reach buttons on the front of the Ni-E.



Expandable system broadens application possibilities

Multi-color fluorescent imaging (Ni-E)

Demand for multi-color fluorescent imaging that uses newly developed fluorescent proteins and fluorescent reagents is constantly increasing. Nikon meets such needs with diverse functions and optical technologies.

■ Motorized epi-fluorescence illuminator capable of quick wavelength change

The motorized barrier filter wheel and the motorized epi-fluorescence cube turret with built-in motorized shutter enable quick wavelength changes, reducing photobleaching of the specimen. They can be operated via easily accessible control buttons, increasing efficiency of operation.

■ CFI Plan Apochromat Lambda series objectives

Transmission and chromatic aberration correction have been improved throughout the wide range of visible to near-IR wavelengths, allowing use of various fluorescent reagents. They provide bright, high-contrast, high S/N (signal-to-noise) ratio multi-color fluorescence images with almost no focus shift when used with any wavelength.

Multi-color
fluorescent
observation

FISH

Signal
conversion

Photoactivation imaging (Ni-E/Ni-U)

Research into the reactions and changes of stimulated cells has become popular in recent years. Nikon has developed a photoactivation unit for upright microscopes, a first in microscopy.

■ Flexible stratum structure

This structure allows two-layer mounting of a photoactivation unit with an epi-fluorescence attachment.

■ Objectives for long-wavelength laser

With CFI Plan Apochromat Lambda objectives, chromatic aberration has been corrected up to near-IR wavelength range and transmission improved in the long wavelength range, increasing accuracy and efficiency of laser excitation at target site.

Photo-
activation

FRAP

Simultaneous multichannel imaging (Ni-E/Ni-U)

The Ni's back port and the quadrocular tilting tube allow the user to acquire simultaneous, two-channel images on separate cameras. This feature is invaluable for applications such as FRET.

Simultaneous imaging with two cameras

The Ni's flexible stratum structure enables incorporation of a back camera port unit, allowing simultaneous image acquisition of two different wavelengths with two different cameras mounted on the back port unit and the quadrocular tilting tube. This enables the capture of high-resolution images in the entire frame for each wavelength without dividing the CCD chip. The use of individual cameras for acquisition allows the user to tailor acquisition parameters for each channel independently, allowing acquisition of high-sensitivity FRET images.

* For information about compatible cameras, contact Nikon or Nikon dealers.

FRET

Ratio
imaging

Multiphoton imaging (Ni-E)

Multiphoton microscopy in which long excitation wavelengths are used to allow less-invasive imaging of ever deeper areas of cells is gaining popularity. The design of the Ni-E model is optimized for multiphoton imaging in both optical and mechanical systems to meet the demands of today.

Objective dedicated to multiphoton imaging

CFI75 Apochromat 25XC W objective features chromatic aberration correction over a broad wavelength range from visible to near-IR, high NA (numerical aperture) (1.10) and longer working distance (2.00 mm), and compatibility with water immersion and water dipping.

High-sensitivity multiphoton detector (NDD)

This episcopic NDD (non-descanned detector) unit incorporates a detector that efficiently senses weak signals from deep areas of live specimens. In combination with a diascope NDD unit, transmitted signals can be also detected.

Retrofittable focusing nosepiece mechanism

Microscopes can be modified by switching the focusing stage and focusing nosepiece, enabling fixed-stage configuration to meet demands of experiments such as *in vivo* imaging.

In vivo
imaging

Two-photon
imaging

Photo
activation

Versatile microscopes meet all demands

Manual and motorized models

To meet diverse user demands for operability, system expandability and motorized control, Nikon provides two Ni series models. The Ni-U, which has compatibility with some motorized accessories, is the manual model suitable for high-quality image observation and digital imaging. The Ni-E is a fully motorized model that is efficient for experiments requiring comprehensive control of various devices, such as photoactivation units and confocal systems.

Ni-U (manual model)

- Ergonomic tube and stage handle height adjustment mechanism allow comfortable viewing positions.
- Stratum structure and sturdy design improve expandability.
- Motorized nosepiece and motorized epi-fluorescence cube turret can be utilized.
- An optional LED light source for brightfield and phase contrast observation is also available.



Ni-U configured with an ergonomic binocular tube



The dedicated, simple remote control pad allows motorized changing of objectives and filter cubes, and operation of the shutter that is built into the cube turret.

Ni-E (motorized model)

- High-precision motorized focusing
- Broad range of motorized accessories that can be used in combination.
- Observation conditions can be changed at a simple push of a button.
- Stratum structure and sturdy design improve expandability.
- 3D ergo design buttons with improved operability are located close together for speedy operations.
- Microscope settings in use can be verified on the display.
- Optimized for multiphoton excitation imaging
- Two focusing mechanism options: focusing stage and focusing nosepiece

Automatic adjustment with objective changeover

Condenser, aperture and field diaphragm, and ND filter are automatically set to the optimal position during objective changeover. In addition, stage XYZ travel amount per handle rotation and parfocal distance deviation correction are automatically adjusted. Microscope settings can also be manually adjusted.

Change of observation conditions

Selected observation conditions can be designated to individual buttons, enabling changes to be made at the push of a button. This is particularly convenient when reproducing specific observation conditions.

High-precision motorized focusing

High-precision Z-focus incorporated by the Ni-E provides accurate Z-position information required for use with confocal laser microscopes. Individual coarse and fine focus knobs provide enhanced ease of operation.



Ni-E configured with a motorized epi-fluorescence cube turret and motorized universal condenser



Technologies supporting the Ni series

Supreme optical performance

As a light microscope manufacturer, Nikon has cultivated high technical capabilities and confidence. With its advanced technologies extending from optical glass production to lens design, fabrication, coating and processing, Nikon provides unsurpassed optical performance.

High-performance objective lens

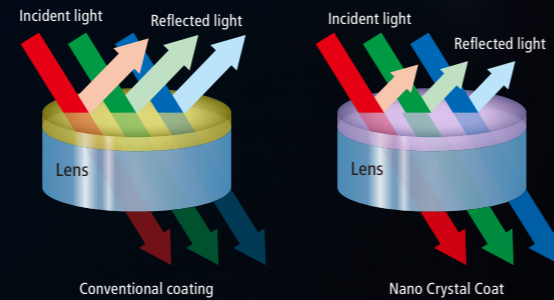
● CFI Plan Apochromat Lambda series

With remarkably high NA, greatly improved transmission in the long wavelength range thanks to Nikon proprietary Nano Crystal Coat, and chromatic aberration correction extending from visible to near-IR wavelength range, these objectives are ideally suited not only for brightfield and DIC observations but also for fluorescent observations. These lenses allow acquisition of bright and clear images at any wavelength and multi-color fluorescence imaging. Because bright images can be captured even with a weak excitation light, damage to a specimen is minimized.



Nano Crystal Coat

This anti-reflective coating that consists of nanometer-size particles is based on semiconductor manufacturing technology and is also used for Nikon camera lenses. The coarse structure with particles arranged in a spongy construction with uniform spaces between them enables extremely low refractive indices.



● Water dipping objective lenses

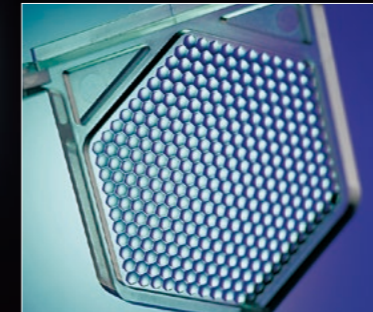
With a long working distance and high NA, these objectives provide excellent transmission in near-IR wavelength range. The axial chromatic aberration of 40X and 60X objectives has been corrected up to near-IR range, allowing high-resolution images of minute structures in thick specimens during IR-DIC observation.

Both the 25XC W and 100X objectives feature high NA (1.10) and a long working distance (2.00 mm with 25XC W and 2.50 mm with 100XC W). With chromatic aberration corrected in the IR range, these objectives are ideal for multiphoton excitation observation. In addition, by employing a mechanism to compensate for changes in spherical aberration that occur at different temperatures and depths of observation points, clear images of areas deep within a thick specimen can be captured.



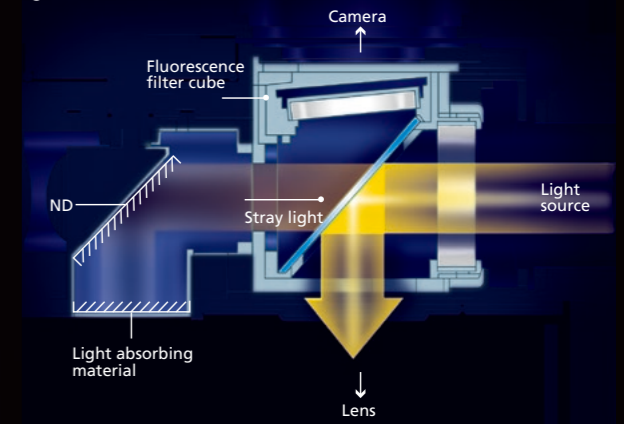
Uniformly bright illumination

The "fly-eye" lens is ideally suited to diascope illumination optical systems. Uniform and bright illumination up to the viewfield periphery is provided at any magnification.

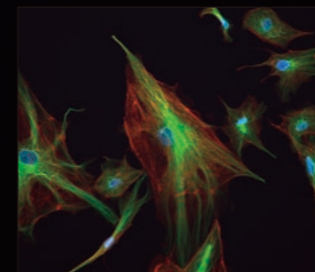


Fluorescence noise elimination

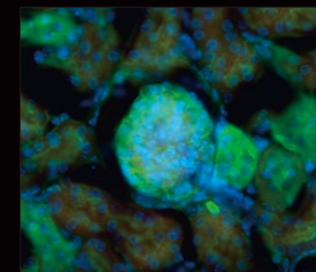
Nikon's proprietary noise terminator mechanism is employed in the epi-fluorescence cube turret and filter cubes. The S/N ratio has been dramatically improved by thoroughly eliminating stray light in the filter cubes, allowing images of weak fluorescent signals to be captured with high contrast and brightness.



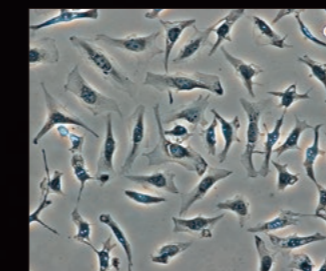
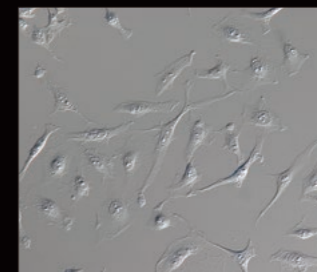
Excellent image acquisition with all observation methods



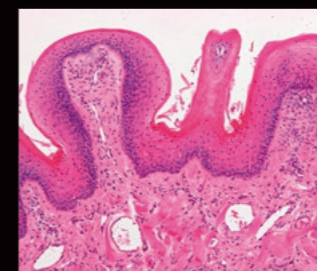
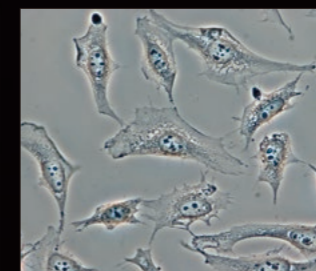
Epi-fluorescence observation



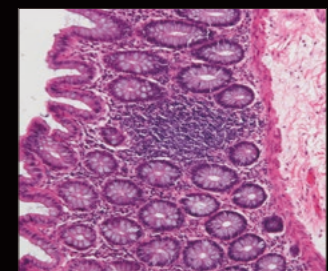
DIC (Differential Interference Contrast) observation



Phase contrast observation



Brightfield observation



Ultimate ease, speed and clarity in imaging

The Ni series can be controlled in conjunction with a Digital Sight series digital camera, facilitating effortless digital imaging. Images can be captured with a dedicated button on the microscope body. Camera control from the software GUI on a PC and the touchscreen on a tablet PC is also possible.

Image capture button

Images can be acquired by simply pressing the image capture button located on the microscope base.



Digital cameras for microscopes

The optimal camera for your specific imaging needs can be selected from the Digital Sight series of cameras, which offers various features such as high sensitivity, high resolution, high speed image acquisition, color reproducibility and a cooling system.

F-mount cameras

● Microscope Camera DS-Ri2

This 16.25-megapixel, high-definition camera is equipped with a Nikon FX-format CMOS sensor. The high frame rate of up to 45 fps (1636 x 1088 pixels) enables fast focusing. The image processing engine allows accurate color reproduction of microscopy images. Color fluorescent images can be clearly captured with its low-noise design.



● Monochrome Microscope Camera DS-Qi2

Equipped with monochrome CMOS sensor (16.25-megapixel). High-speed image capture of up to 45 fps (1636 x 1088 pixels). High sensitivity and superb S/N ratio design. Moreover, mounting a Peltier cooling device provides bright fluorescent images. Reliable quantitative analysis with excellent linearity.



C-mount camera

● Microscope Camera DS-Fi3

Equipped with a 5.9 megapixel CMOS image sensor. It provides high-definition imaging up to 2880 x 2048 pixels and up to 30 fps of fast imaging. With superior color reproduction and high sensitivity, images that are faithful to samples can be acquired during various observation methods, such as brightfield, DIC, phase contrast and epi-fluorescence.



NIS-Elements imaging software

Various packages are available to suit the user's imaging applications, including NIS-Elements L, which allows easy image acquisition, and NIS-Elements Ar, Br, and D, which enable advanced image acquisition through integrated control between a camera and microscope.



● NIS-Elements L

NIS-Elements L imaging software, featuring simple and user-friendly GUI, allows easy camera setting and image capturing using DS-Ri2 and DS-Fi3 microscope cameras.

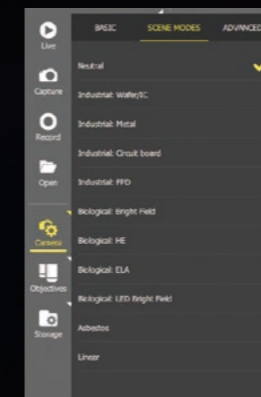
Enables image/movie acquisition and storage using a tablet PC*, facilitating effective sharing of images and presentations. Also supports touch screen operation.

*For information about compatible tablet PCs, contact Nikon.



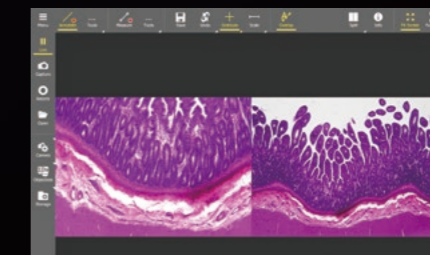
Scene modes

The scene modes function enables the optimal camera setting for each sample and imaging technique by simply choosing the type of illumination or stain.



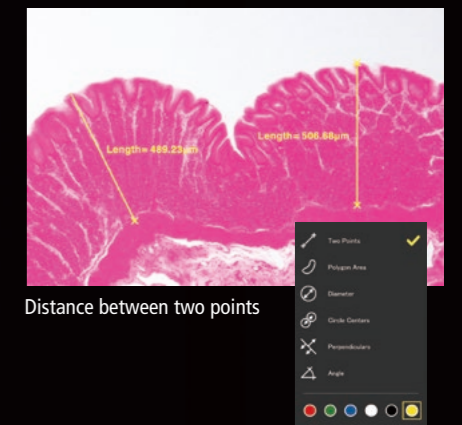
Split-screen display

The split-screen display function enables real-time comparisons between live and captured images by displaying them side-by-side and synchronizing zooming between both images.



Measurement

Simple measurement functions, such as distance measurement between two points, area measurement and angle measurement, are available.



● NIS-Elements Ar, Br, D

The NIS-Elements Ar, Br and D packages seamlessly integrate cameras, peripheral devices, and the motorized functions and accessories of Ni, serving as a powerful yet easy-to-use interface for complex imaging experiments.

NIS-Elements D allows time-lapse, Z-series and multi-point acquisition, while Ar allows multi-dimensional image acquisition of up to 6D (x, y, z, t, multichannel and multipoint) and Br allows up to 4D.

Powerful tools for quick processing, measurement and acquired data management provide a one-step solution for acquisition and analysis.

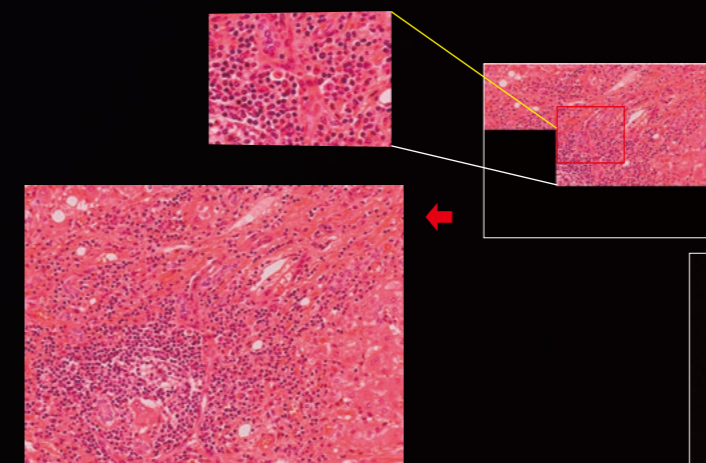
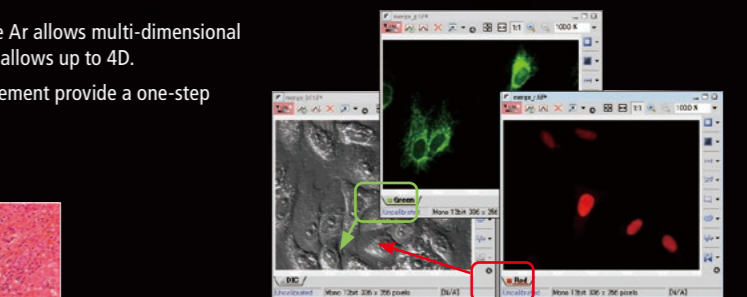
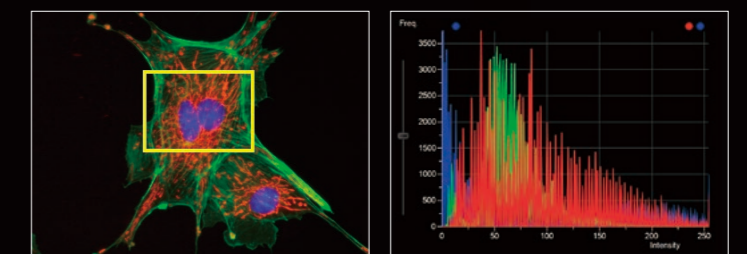


Image stitching (large image)



Merge channels



Histogram

High-resolution confocal imaging systems

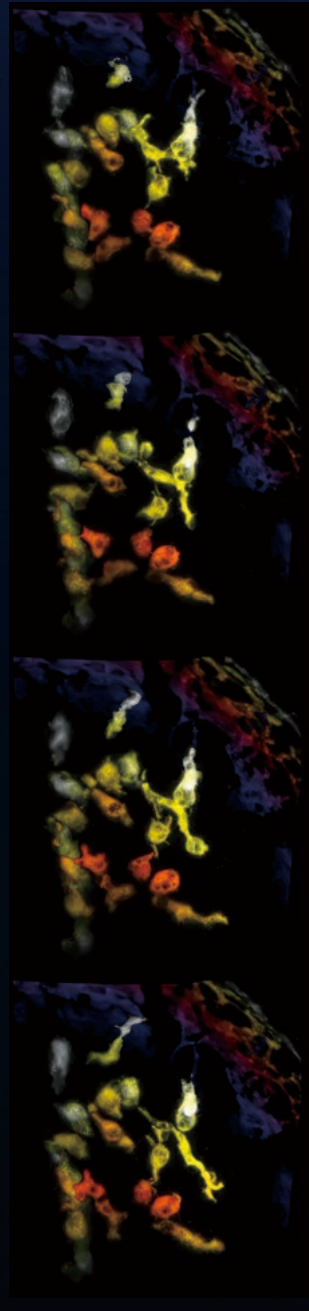
Combining the Ni-E's high-precision Z-focus mechanism with a confocal scanner allows high-resolution, high-S/N-ratio imaging of 3D structures of organs and cells. The Ni-E can be configured with either a focusing stage or a focusing nosepiece, catering to specific imaging requirements.

● Confocal microscope AX/AX R

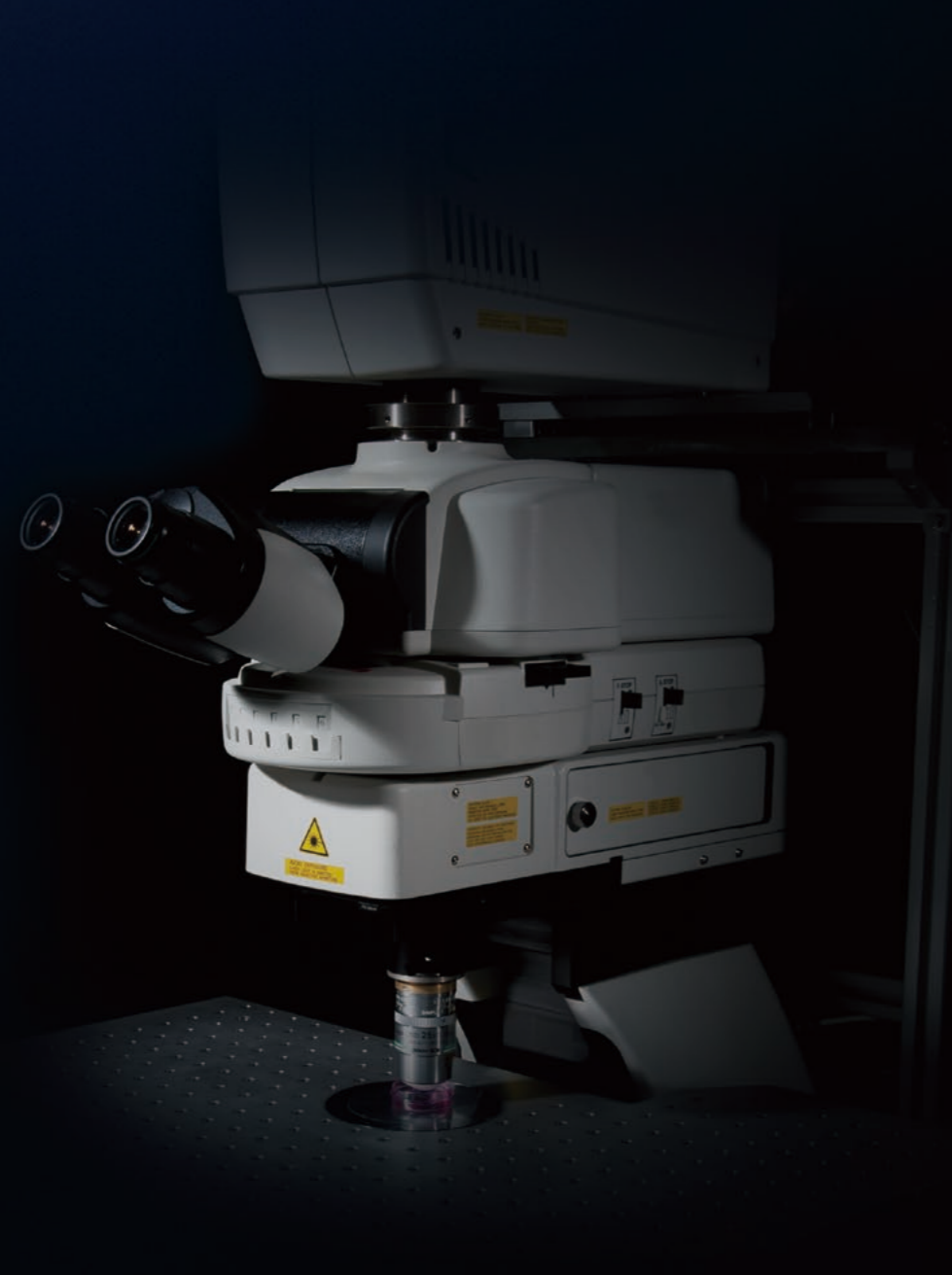
AX incorporates a high-definition (up to 8192 x 8192 pixels) galvano scanner. AX R also incorporates a high-speed (up to 720 fps) resonant scanner, in addition to the galvano scanner, enabling true simultaneous photoactivation and confocal imaging.

● Multiphoton confocal microscope A1 MP+/A1R MP+

High-sensitive deep imaging of living specimens is possible with A1 MP+'s high-resolution (up to 4096 x 4096 pixels) and A1R MP+'s high-speed (up to 720 fps) imaging capability. A combination of episcopic and diasopic GaAsP NDDs allow more efficient acquisition of emission signals. Simultaneous excitation imaging using dual beam 1300nm-compatible IR lasers is possible.



3 dimensional reconstruction Z series (color coded by Z depth) of microglial movement in developing zebrafish, obtained with high speed resonant imaging and piezo Z stepping. Courtesy of Dr. E. Burton, Department of Neurology, University of Pittsburgh.



Enhanced system expandability provides the best solution

Ni series accessories are segmented by function, allowing you to select required units and flexibly combine them to create lean and effective system configurations.

System configuration for acquiring multi-stained specimen images

The motorized epi-fluorescence cube turret shutter, which helps to reduce photobleaching of specimens, is easily operated with a convenient remote control pad.

Images are automatically acquired by controlling the motorized accessories, including the epi-fluorescence cube turret according to the camera settings such as exposure time, camera gain, and time interval.

This configuration is recommended for those who conduct mostly fluorescent observations rather than brightfield observations.



Configuration of manual microscope Ni-U with motorized epi-fluorescence cube turret, epi-fluorescence attachment, motorized septuple nosepiece, digital camera DS-Fi3, simple remote control pad, control box B

System configuration for acquiring pathological specimen images

Optimal brightness can be automatically adjusted with objective changeover, eliminating the need for manual adjustment. By controlling the optical zooming of the motorized DSC zooming port for quadocular tube, it is possible to capture images with the desired angle of field while maintaining the image quality.



Configuration of motorized microscope Ni-E with motorized quadocular tilting tube, motorized DSC zooming port, motorized ND filter, digital camera DS-Fi3, motorized XY stage and joystick, control box A

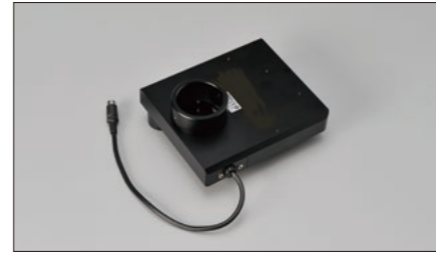
Wide array of accessories finely segmented by function



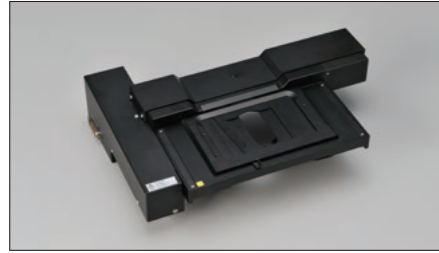
Motorized quadrocular tilting tube (Ni-E)
Motorized changeover of optical paths is possible. Eyepiece inclination can be adjusted from 15° to 35°.



Motorized DSC zooming port (Ni-E)
A digital camera can be mounted on the camera port. A motorized 0.6X - 2.0X zoom optical system is incorporated.



Motorized ND filter (Ni-E)
Brightness is automatically optimized with the changeover of the motorized nosepiece. Motorized adjustment of desired brightness is also possible.



Motorized XY stage (Ni-E)
Effective for applications that require highly accurate positioning, such as photoactivation imaging and FISH.



Joystick for motorized stage (Ni-E)
Makes control of motorized XY stage possible.



Ergo controller (Ni-E)
In addition to motorized microscope operation, XYZ control of stage is possible with similar operational ease as that of an actual microscope.



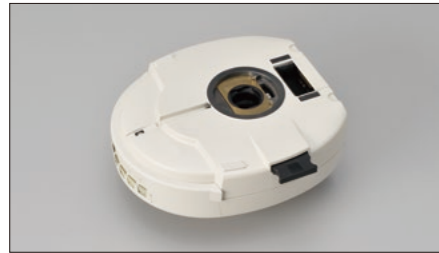
Motorized universal condenser Dry (Ni-E)
High-speed motorized changeover of condenser modules for brightfield, phase contrast, DIC and simple darkfield observations is possible.



Motorized barrier filter wheel (Ni-E)
Barrier filter positions (7 positions—using 25 mm filters) can be changed at a high speed of 0.2 sec. between adjacent positions.



Motorized DIC sextuple nosepiece (Ni-E, Ni-U)
Objective magnification is automatically saved along with the captured image. Built-in prism/analyzer plate slot.



Motorized epi-fluorescence cube turret (Ni-E, Ni-U)
Noise terminator provides high S/N ratio. Six filter cubes can be installed. Either an epi-fluorescence attachment or a photoactivation unit can be attached.



Photoactivation unit (Ni-E, Ni-U)
Laser light photoactivation and episodic illumination are possible. Both the photoactivation unit and the confocal system can be used with a single laser source.



Back port unit (Ni-E, Ni-U)
Enables simultaneous acquisition of images with two different wavelengths using two cameras.



D-FL-2 U-EPI Fluorescence Attachment (Ni-E, Ni-U)
The fully integrated epi-fluorescence cube turret can accept 6 filter cubes and the built-in noise terminator provides a high S/N ratio.



D-LEDI Fluorescence LED Illumination system (Ni-E, Ni-U)
An LED light source for fluorescence observation that can be directly attached to an epi-fluorescence attachment in the same way as a lamp house.



Simple remote control pad (Ni-U)
Motorized operation of the nosepiece, epi-fluorescence cube turret and shutter is possible.

Feel the evolution

Nikon has drawn on its proven optics and mechanical design technologies to develop the compact and high-performance ECLIPSE Ci series research microscope. Ci-E and Ci-L plus adopt Nikon's unique, high-intensity LED as the light source for diascopic observation. High-quality objectives and high S/N epi-fluorescence attachments provide bright and high contrast fluorescence images. Image capture of specimens is easy and efficient when the microscope is configured with Nikon Digital Sight series cameras. With its high-optical performance and advanced easy control, the ECLIPSE Ci series supports research using a broad range of illumination techniques including phase contrast, darkfield and simple polarizing.

Ci

- High-intensity, uniform LED illumination (Eco-illumination)
- Epi-fluorescence attachments equipped with noise terminator mechanism
- Reliable high-performance objectives
- Observation and image capture with comfortable posture
- Motorized magnification switching by the push of a button (Ci-E)
- Automatic adjustment of light intensity and scale display linked to magnification switching
- Simple image capturing by the push of a button on the microscope
- Enables a wide variety of observations

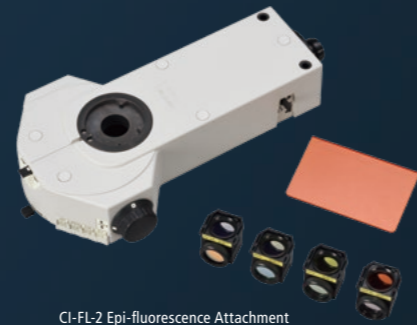


High quality images powered by Nikon's reputed optical technologies

Nikon's well-reputed optical technologies enable the capture of sharp and high quality images in a wide variety of techniques, including brightfield and epi-fluorescence observations. The epi-fluorescence attachments of the ECLIPSE Ci series allow weakly fluorescent specimens to be captured with great clarity and brightness.

Epi-fluorescence attachments

Two epi-fluorescence attachments are available: CI-FL-2 (four filter cubes mountable) and D-FL-2 (six filter cubes mountable). The noise terminator is utilized in the D-FL-2 and this allows bright, high-contrast and high signal to noise (S/N) ratio fluorescence image capturing. The name and position of the mounted filter cubes are displayed with phosphorescent labels for easy identification in darkened rooms. The filters or dichroic mirrors in the filter cubes can be easily replaced to create a more specific combination.



CI-FL-2 Epi-fluorescence Attachment

High-optical performance objectives

● CFI Plan Apochromat Lambda series

With remarkably high NA, greatly improved transmission in the long wavelength range thanks to Nikon proprietary Nano Crystal Coat*, and chromatic aberration correction over wide wavelength range, these objectives are ideally suited not only to brightfield observations but also to fluorescence observations. Bright images can be captured even with a weak excitation light, thereby reducing damage to the specimen.

* See page 10.



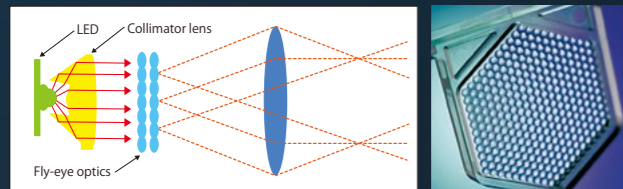
● CFI Plan Fluor series

Featuring an extra-high transmission rate, especially in the ultraviolet wavelength, combined with flatness of field, this series is perfect for fluorescence observation and imaging. These objectives can function as multi-purpose objectives for brightfield, fluorescence and simple/sensitive color polarizing observations.



Eco-illumination

By combining a collimator lens, fly-eye optics and LED illumination, bright and uniform images up to the periphery can be obtained. The LED is a low power consumption unit that reduces lamp replacement frequency thanks to its long-life, and provides the same color temperature in every magnification.



Fly-eye lens

Auto light intensity reproduction

The user-defined light intensity for each objective is recorded by pressing a knob for Ci-L plus, and automatically recorded for Ci-E. The light intensity level is automatically recalled and applied when the objective is used again, eliminating the need for manual readjustment.



Push the knob on the Ci-L plus briefly to record the intensity.

Unparalleled basic performance

Automatic scale bar adjustment linked to magnification change

The Ci-E/Ci-L plus nosepiece detects the state of the objective in use and automatically adjusts the scale bar in the image based on the magnification, eliminating the need for manual adjustment.

*Requires dedicated camera and software (optional).



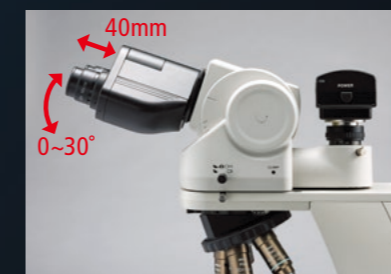
Image capture button

Imaging with the Digital Sight series cameras is possible with the one touch button located on the microscope base.



Adjustable design to suit the user's natural posture

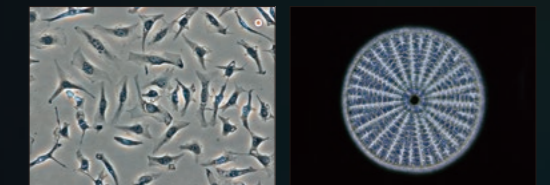
The angle and extension of the ergonomic binocular tube can be adjusted while mounting a camera. The height of the stage and its handle can be adjusted, enabling observation in a comfortable posture.



Provides comfort even during prolonged observations

Versatile diascope observation techniques

Various accessories for diascope observation are available. High-intensity eco-illumination provides sufficient light intensity for phase contrast observation of colorless and transparent samples, simple polarizing, and dark-field observation.



Phase contrast

Darkfield

Motorized magnification switching model Ci-E

Nosepiece rotating buttons

The nosepiece can be rotated with one-touch button control. Your two favorite magnifications can be registered*, and one press of the button alternates between these two objectives.

* Using the remote control pad.



Remote control pad

By programming specific buttons to correspond to specific objectives, magnification can be easily changed with a one touch button.



Automatic adjustment linked to objective switching

When the objective is switched, not only is the user-defined light intensity reproduced, but also the top lens element of the condenser automatically swings in or out according to the selected objective.



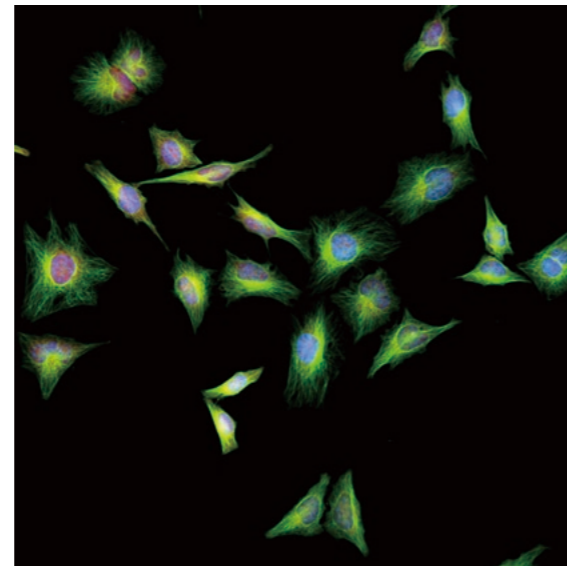
Epi-fluorescence light sources for Ni/Ci

D-LEDI Fluorescence LED illumination system

An eco-friendly light source optimized for fluorescence observation. It is a light source that can be directly mounted on the epi-fluorescence attachment in the same way as a lamp house, and provides sufficient light intensity for fluorescence observation.



D-LEDI Fluorescence LED Illumination system



HeLa cells captured with CFI Plan Apochromat Lambda 40XC objective



configured with Ni-U

Wavelength intensity control

Four types of LEDs (with main wavelengths of 385 nm, 475 nm, 550 nm and 621 nm) are equipped to support excitation wavelengths commonly used for fluorescence observation. Using the included controller, the user can simultaneously turn on/off individual, multiple or all wavelength lights. Adjusting the light intensity of each wavelength from 0 to 100% (in 1% step) is also possible.

Control from NIS-Elements software

With NIS-Elements imaging software, light intensity control of each wavelength is possible while keeping their intensity ratios. It also enables the emission of excitation light synchronized with image acquisition, and is effective for time-lapse imaging.

No vibration generation

The D-LEDI adopts a natural cooling system, which does not use cooling fans. This eliminates the generation of vibration and is suitable for high-magnification observation.

Maintenance free

The built-in LEDs have a long life of approximately 20,000-hours, and eliminate the need for frequent lamp replacement which was required with a mercury lamp light source.

Alignment free

With a mercury lamphouse, lamp centering adjustment was required. The LEDs in this light source are rigorously adjusted at the time of manufacture, and do not require a centering process.

Recommended filter cubes

Filter Cubes	Wavelength	Compatible LED
C-LED385	EX400/40, DM425, BA478/85	385 nm
C-LED470	EX470/40, DM495, BA525/50	470 nm
C-LED525	EX531/40, DM562, BA593/40	525 nm
C-LED625	EX620/60, DM660, BA700/75	625 nm

Objectives for Ni/Ci

Type	Use	Model	Immersion	NA	W.D. (mm)	Cover glass thickness	Correction ring	Spring loaded	Brightfield	Darkfield	DIC	Phase contrast	Polarizing	Fluorescence			
														UV	Visible light	NR	
Super Fluor	Brightfield (CFI Super Fluor)	4X		0.20	15.50	—			○				△	○340	○		
		10X		0.50	1.10	0.17		✓	○	○●	○		△	○340	○		
		20X		0.75	1.00	0.17		✓	○	○●	○		△	○340	○		
		40XC		0.90	0.34-0.26	0.11-0.23	✓	✓	○	●	○		△	○340	○		
		40X Oil	Oil	1.30	0.19	0.17		✓w/stopper	○		○		△	○340	○		
		100XS Oil	Oil	0.50-1.30	0.20	0.17		✓	○	○●	○		△	○340	○		
Plan Fluor	Brightfield (CFI Plan Fluor)	4X		0.13	17.20	—			○				△	○	○		
		10X		0.30	16.00	0.17			○	△	○		○	○	○		
		20X		0.50	2.10	0.17			○	○●	○		○	○	○		
		20XC MI	Oil, water, glycerin	0.75	0.51-0.35 0.51-0.34 0.49-0.33	0-0.17	✓	✓	○	○●	○			○	○	○	
		40X		0.75	0.66	0.17		✓	○	○●	○			○	○	○	
		40X Oil	Oil	1.30	0.24	0.17		✓w/stopper	○		○			○	○	○	
	Phase contrast (CFI Plan Fluor)	60XC		0.85	0.40-0.31	0.11-0.23	✓	✓	○	●	○			○	○	○	
		60XS Oil	Oil	0.50-1.25	0.22	0.17		✓	○	○●	○			○	○	○	
		100X Oil	Oil	1.30	0.16	0.17		✓w/stopper	○		○			○	○	○	
		100XS Oil	Oil	0.50-1.30	0.16	0.17		✓	○	○●	○			○	○	○	
		DLL 10X		0.30	16.00	0.17			○	△	○		○ PH1		○	○	
		DLL 20X		0.50	2.10	0.17			○	○●	○		○ PH1		○	○	
Apodized phase contrast (CFI Plan Fluor)	DLL 40X		0.75	0.66	0.17		✓	○	○●	○		○ PH2		○	○		
	DLL 100X Oil	Oil	1.30	0.16	0.17		✓w/stopper	○		○		○ PH3		○	○		
	ADH 100X Oil	Oil	1.30	0.16	0.17		✓w/stopper	○		○		○ PH3		○	○		
	Plan Apochromat	Brightfield (CFI Plan Apo)	Lambda 2X		0.10	8.50	—			○				○	△	○	○
			Lambda 4X		0.20	20.00	—			○				○	△	○	○
			Lambda 10X		0.45	4.00	0.17		✓	○	△	○			○	△	○
Lambda 20X				0.75	1.00	0.17		✓	○	○●	○			○	△	○	○
Lambda 40XC				0.95	0.25-0.17	0.11-0.23	✓	✓	○	●	○			○	△	○	○
Lambda 60XC				0.95	0.21-0.11	0.11-0.23	✓	✓	○	●	○			○	△	○	○
Lambda 60X Oil			Oil	1.40	0.13	0.17		✓	○		○			○	△	○	○
Lambda 100X Oil			Oil	1.45	0.13	0.17		✓	○		○			○	△	○	○
Lambda S 10X				0.45	4.00	0.17		✓	○	△	○			○	△	○	○
VC 20X				0.75	1.00	0.17		✓	○	○●	○			○	△	○	○
VC 60XC WI			Water	1.20	0.31-0.28	0.15-0.18	✓	✓	○		○			○	△	○	○
Lambda 100X Oil			Oil	1.40	0.13	0.17		✓	○		○			○	△	○	○
NCG 100X Oil			Oil	1.40	0.16	0		✓	○		○			○	△	○	○
Phase contrast (CFI Plan Apo)			DM Lambda 20X		0.75	1.00	0.17		✓	○	○●	○		○ PH2		△	○
	DM Lambda 40XC		0.95	0.25-0.16	0.11-0.23	✓	✓	○	●	○		○ PH2		△	○	○	
	DM Lambda 60XC		0.95	0.21-0.11	0.11-0.23	✓	✓	○	●	○		○ PH2		△	○	○	
	DM Lambda 60X Oil	Oil	1.40	0.13	0.17		✓	○	●	○		○ PH3		△	○	○	
	DM Lambda 100X Oil	Oil	1.45	0.13	0.17		✓	○		○		○ PH3		△	○	○	
Apochromat	Confocal (CFI Apo)	Lambda S 60X Oil	Oil	1.40	0.14	0.17		✓	○		○		○	○	○		

Use: Clearing *3	Model	Immersion	NA	W.D. (mm)	Cover glass thickness	Correction ring	Spring loaded	Brightfield	Darkfield	DIC	Phase contrast	Polarizing	Fluorescence		
													UV	Visible light	NIR
Multiphoton Confocal (CFI Plan Apo)	10XC Glyc	Water, Oil, Glycerin	0.50	5.50	0-0.17	✓*1		○	●					○	○
Multiphoton (CFI 90)	20XC Glyc	Glycerin	1.00	8.20	—	✓*2		△*4							○

Use: Water dipping *3	Model	Immersion	NA	W.D. (mm)	Cover glass thickness	Correction ring	Spring loaded	Brightfield	Darkfield	DIC	Phase contrast	Polarizing	Fluorescence		Near-infrared DIC
													UV	Visible light	
Multiphoton Confocal (CFI75 Apo)	25XC W	Water	1.10	2.00	0	✓		○	●	○		○	○	○	○
	25XC W 1300	Water	1.10	2.00	0	✓		○	●	○		○	○	○	○
DIC (CFI Plan Fluor)	10X W	Water	0.30	3.50	0			○	△	○		○	○	○	○
	NIR 40X W	Water	0.80	3.50	0			○	●	○		○	△	○	○
IR-DIC (CFI Apo)	NIR 60X W	Water	1.00	2.80	0			○	●	○		○		○	○
	NIR 100X W	Water	1.10	2.50	0	✓		○	●	○		○		○	○
DIC (CFI Plan)	100XC W	Water	1.10	2.50	0	✓		○	●	○		○		○	○
DIC (CFI75)	LWD 16X W	Water	0.80	3.00	0			○	●	○		○		○	○

Note 1. Model name
The below letters, when included in the model names, indicate the respective features.
C: with correction ring
NCG: for use without cover glass
S: with iris
WI: water immersion type
W: water dipping type
MI: multi immersion (oil, water, glycerin) type

Note 2. Cover glass thickness
—: can be used without cover glass
0: use without cover glass

Note 3. Darkfield microscopy
Possible with the following
△: universal condenser (dry) and darkfield ring
○: above and darkfield condenser (dry)
●: darkfield condenser (oil)

Note 4. Phase rings are classified by objective NA
PH1, PH2, PH3: condenser cassette modules.

Note 5. Fluorescence microscopy (UV)
△: possible with visible light that has a longer wavelength than the excitation light used for DAPI
○: suitable
○: recommended for best results
340: high transmittance with an ultraviolet wavelength range of up to 340nm

Note 6. Brightfield/DIC/Fluorescence (visible light) microscopy
△: possible but not recommended
○: suitable
○: recommended for best results

Note 7. Polarizing
△: possible but not recommended
○: suitable
○: retardation measurement is possible with a polarizing microscope
*1 With correction for refractive index of immersion medium (1.33-1.51)
*2 With correction for refractive index of immersion medium (1.44-1.50)
*3 For Ni-E focusing nosepiece type
*4 Can only be used as a finder (chromatic aberration is corrected above 588 nm)

Ni Specifications

		Ni-E		Ni-U
		Focusing stage type	Focusing nosepiece type	
Main body	Optical system	CFI60 infinity optical system	CFI60 and CFI75 infinity optical systems	CFI60 infinity optical system
	Focusing (stroke from focus point)	Via motorized stage Up/Down movement (Up 2 mm/Down 13 mm)	Via motorized nosepiece Up/Down movement (Up 13 mm/Down 2 mm)	Via manual stage Up/Down movement (Up 3 mm/Down 26 mm)
		Built-in linear encoder, Resolution: 0.025 μm Motorized escape and refocus mechanism Coaxial Coarse/Fine focusing		
	Illumination	Halogen lamp (12V100W) · NI-ND-E Motorized ND Filter (option)		Halogen lamp (12V 100W) LED (option)
		Built-in fly-eye lens Built-in NCB11, ND8, ND32 filters (detachable, one additional filter mountable) and diffuser (non-detachable) ND2 filter (option)		
	Controls	Transmitted light On/Off switch, Intensity control dial with preset function Image capture button		
Built-in motorized control switches		—		
Power supply unit	External power supply NI-CTLA Control Box A for all configurations		—	
	Built-in for halogen lamp NI-CTLB Control Box B is necessary when Motorized/Intelligent options are combined.		—	
Eyepieces (F.O.V. mm)		· CFI 10X (22) · CFI 12.5X (16) · CFI 15X (14.5) · CFI UW10X (25)		
Tubes	F.O.V. 22 mm (Eyepiece/Port)	· C-TB Binocular Tube · C-TE2 Ergonomic Binocular Tube (100/0, 50/50 via optional C-TEP2 DSC Port, C-TEP3 DSC Port C-0.55X or C-TEPF2.5 DSC Port F2.5X) Inclination angle: 10-30 degree, Extension up to 40 mm		
	F.O.V. 25 mm*1 (Eyepiece/Port)	· C-TF Trinocular Tube F (100/0, 0/100) · C-TT Trinocular Tube T (100/0, 20/80, 0/100) · C-TT-C Trinocular Tube (100/0, 0/100, for confocal)*2 · LV-T13 Trinocular ESD Tube T (100/0, 0/100) · NI-TT Quadrocular Tilting Tube (Eyepiece/Upper port/Rear port: 100/0/0, 0/100/0, 0/0/100) Inclination angle: 15-35 degree · NI-TT-E Motorized Quadrocular Tilting Tube (Eyepiece/Upper port/Rear port: 100/0/0, 0/100/0, 0/0/100) Inclination angle: 15-35 degree		
Ports (F.O.V. 11 mm)	· C-TEP2 DSC Port for Ergonomic Binocular Tube (with C-mount adapter, 0.7X) · C-TEP3 DSC Port C-0.55X for Ergonomic Binocular Tube (with C-mount adapter, 0.55X) · C-TEPF2.5 DSC Port F2.5X for Ergonomic Binocular Tube (with F-mount adapter, 2.5X) · NI-BPU Back Port Unit (with C-mount adapter, 1.0X) · NI-RPZ DSC Zooming Port for Quadrocular Tube (with C-mount adapter, manual zoom, 0.6X - 2.0X)			—
	· NI-RPZ-E Motorized DSC Zooming Port for Quadrocular Tube (with C-mount adapter, motorized zoom, 0.6X - 2.0X)			—
Arms	· NI-SAM Standard Arm			—
	· NIE-CAM Contact Arm (for Motorized/Intelligent options)		· NIU-CAM Contact Arm (for Motorized/Intelligent options)	
Nosepieces	Motorized	· NI-N7-E Motorized Septuple Nosepiece · NI-ND6-E Motorized DIC Sextuple Nosepiece	—	· NI-N7-E Motorized Septuple Nosepiece · NI-ND6-E Motorized DIC Sextuple Nosepiece
	Intelligent	· NI-N7-I Intelligent Septuple Nosepiece · NI-ND6-I Intelligent DIC Sextuple Nosepiece	—	· NI-N7-I Intelligent Septuple Nosepiece · NI-ND6-I Intelligent DIC Sextuple Nosepiece
	Manual	· D-ND6 DIC Sextuple Nosepiece · C-N6 ESD Sextuple Nosepiece ESD · C-N6A Sextuple Nosepiece with Analyzer Slot · LV-NU5 Universal Quintuple Nosepiece ESD · LV-NBD5 BD Quintuple Nosepiece ESD	· FN-S2N 2 Place Sliding Nosepiece (for CFI60 objectives) Changeover 2 objectives, DIC slider insertable · FN-MN-H CFI 75 Holder (for CFI75 objective) DIC slider insertable · FN-MN-H2 CFI 90 Holder (for CFI90 objective)	· D-ND6 DIC Sextuple Nosepiece (for CFI60 objectives) · C-N6 ESD Sextuple Nosepiece ESD · C-N6A Sextuple Nosepiece with Analyzer Slot · LV-NU5 Universal Quintuple Nosepiece ESD · LV-NBD5 BD Quintuple Nosepiece ESD

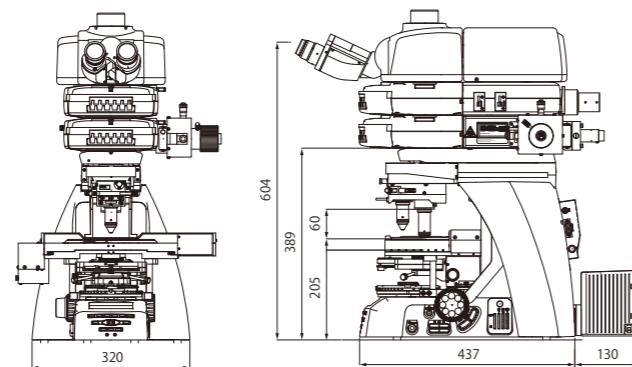
		Ni-E		Ni-U
		Focusing stage type	Focusing nosepiece type	
Stages		· NIE-CSRR2 Right Handle Rotatable Ceramic-coated Stage with 25 Holder Cross travel 78(X) x 54(Y) mm Handle height and torque adjustable	· FN-3PS2 FN1 Standard Stage Cross travel 30(X) x 30(Y) mm	· C-SR2S Right Handle Stage with 25 Holder · C-CSR1S Right Handle Ceramic-coated Stage with 15 Holder · C-CSR Right Handle Ceramic-coated Stage · NIU-CSRR2 Right Handle Rotatable Ceramic-coated Stage with 25 Holder Cross travel 78(X) x 54(Y) mm Handle height and torque adjustable
		· NI-S-E Motorized XY Stage Resolution: 0.1 μm · NI-SH-D Dish Holder (option)		—
Substages		· NI-SSR Substage (for Motorized Universal Condenser and Rotatable/Motorized stages)	· NI-SSF Substage for Focusing Nosepiece (for LWD condenser and FN1 Standard/Motorized stages)	· NI-SSR Substage (for Rotatable stage) · NI-SS Substage (for Non-rotatable stages)
Condensers (NA)	Motorized	· NI-CUD-E Motorized Universal Condenser Dry (0.88) For DIC, phase contrast, darkfield observations Attached on NI-SSR Substage	—	—
	Manual	· NI-CUD Universal Condenser Dry (0.88) · C-AB Abbe Condenser (0.90) · C-AR Achromat Condenser (0.80) · C-DO Darkfield Condenser Oil (1.20-1.43) · C-DD Darkfield Condenser Dry (0.80-0.95) · C-AA Achromat Aplanatic Condenser (1.40) · C-SA Slide Achromat Condenser 2-100X (0.90) · C-SW Swing-out Achromat Condenser 1-100X (0.90/0.11) · C-SWA Swing-out Achromat Condenser 2-100X (0.90/0.22) · C-LAR LWD Achromat Condenser (0.65) · D-CUO DIC Condenser Oil (1.40)	· FN-C LWD Condenser (0.78) (for DIC and oblique light illumination)	· NI-CUD Universal Condenser Dry (0.88) · C-AB Abbe Condenser (0.90) · C-AR Achromat Condenser (0.80) · C-DO Darkfield Condenser Oil (1.20-1.43) · C-DD Darkfield Condenser Dry (0.80-0.95) · C-AA Achromat Aplanatic Condenser (1.40) · C-SA Slide Achromat Condenser 2-100X (0.90) · C-SW Swing-out Achromat Condenser 1-100X (0.90/0.11) · C-PH Phase Contrast Turret Condenser (0.90)*3 · C-SWA Swing-out Achromat Condenser 2-100X (0.90/0.22) · C-LAR LWD Achromat Condenser (0.65) · D-CUO DIC Condenser Oil (1.40)
Epi-fluorescence illuminator	Filter cube turret	6 filter cubes mountable, Noise Terminator mechanism for all turrets · NI-FLT6-E Motorized Epi-fluorescence Cube Turret Motorized shutter, Status check function*4 · NI-FLT6-I Intelligent Epi-fluorescence Cube Turret Manual shutter, Status check function*4 · NI-FLT6 Epi-fluorescence Cube Turret Manual shutter		
	Light distribution device	· NI-FLEI-2 Epi-fluorescence Attachment Aperture diaphragm and field diaphragm (Centerable/Detachable) · NI-PAU Ni Photoactivation Unit (405 nm to 650 nm lasers)		
	Option	· NI-BAW-E Motorized Barrier Filter Wheel 7 filters mountable, 0.2 sec between adjacent positions · D-FL-2 U-EPI Fluorescence Attachment (6 filter cubes mountable, Noise Terminator mechanism)	D-FL-2 U-EPI Fluorescence Attachment (6 filter cubes mountable, Noise Terminator mechanism)	
Epi-illumination light source		· D-LEDI Fluorescence LED Illumination system		
Power consumption		211W (with max. halogen lamp intensity and full motorized options)	96W (with max. halogen lamp intensity and full motorized options)	Main body: 133W (with max. halogen lamp intensity) Control Box B: 29W (with full motorized options)
Weight (approx.)		29 kg (Epi-fluorescent configuration with motorized quadrocular tilting tube)	42 kg (Photoactivation configuration with motorized quadrocular tilting tube)	20 kg (Brightfield configuration with ergonomic binocular tube)

*1 Eyepiece F.O.V.: When used with an expanded configuration such as a double layer of fluorescent cube turrets, eyepiece F.O.V. is 22 mm. F.O.V. to imaging ports vary depending on the model.
*2 Cannot be used with the focusing nosepiece type.
*3 Can only be mounted on the NI-SS Substage.
*4 Status check function: Status of Filter/Nosepiece etc. can be recorded with captured images. Can be displayed on the PC operation screen.

Ni Dimensional diagram

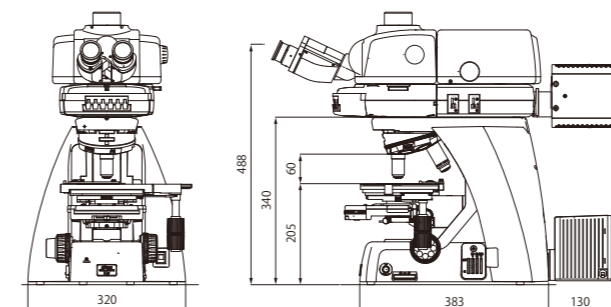
Ni-E (for use with focusing nosepiece)

Configured with an Ni photoactivation unit, two-tiered motorized epi-fluorescence cube turret and motorized quadrocular tilting tube



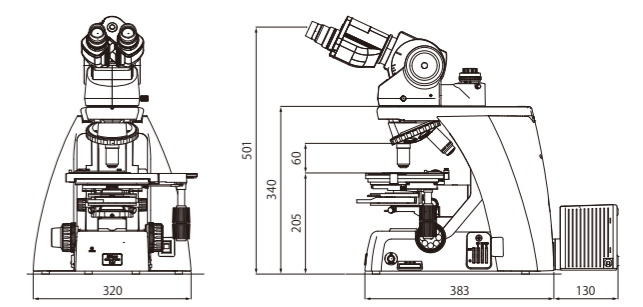
Ni-U

Configured with an epi-fluorescence cube turret and quadrocular tilting tube

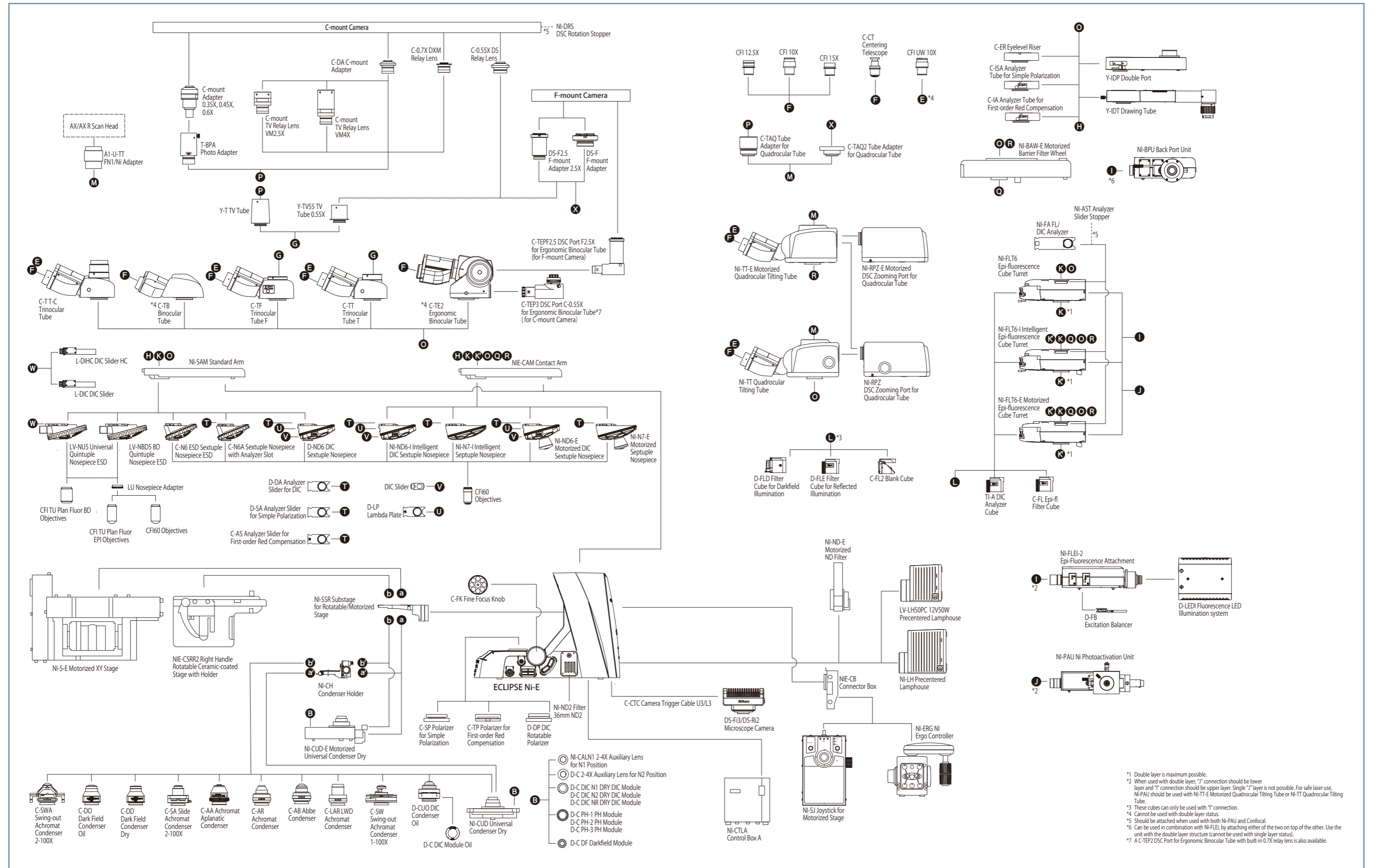


Ni-U

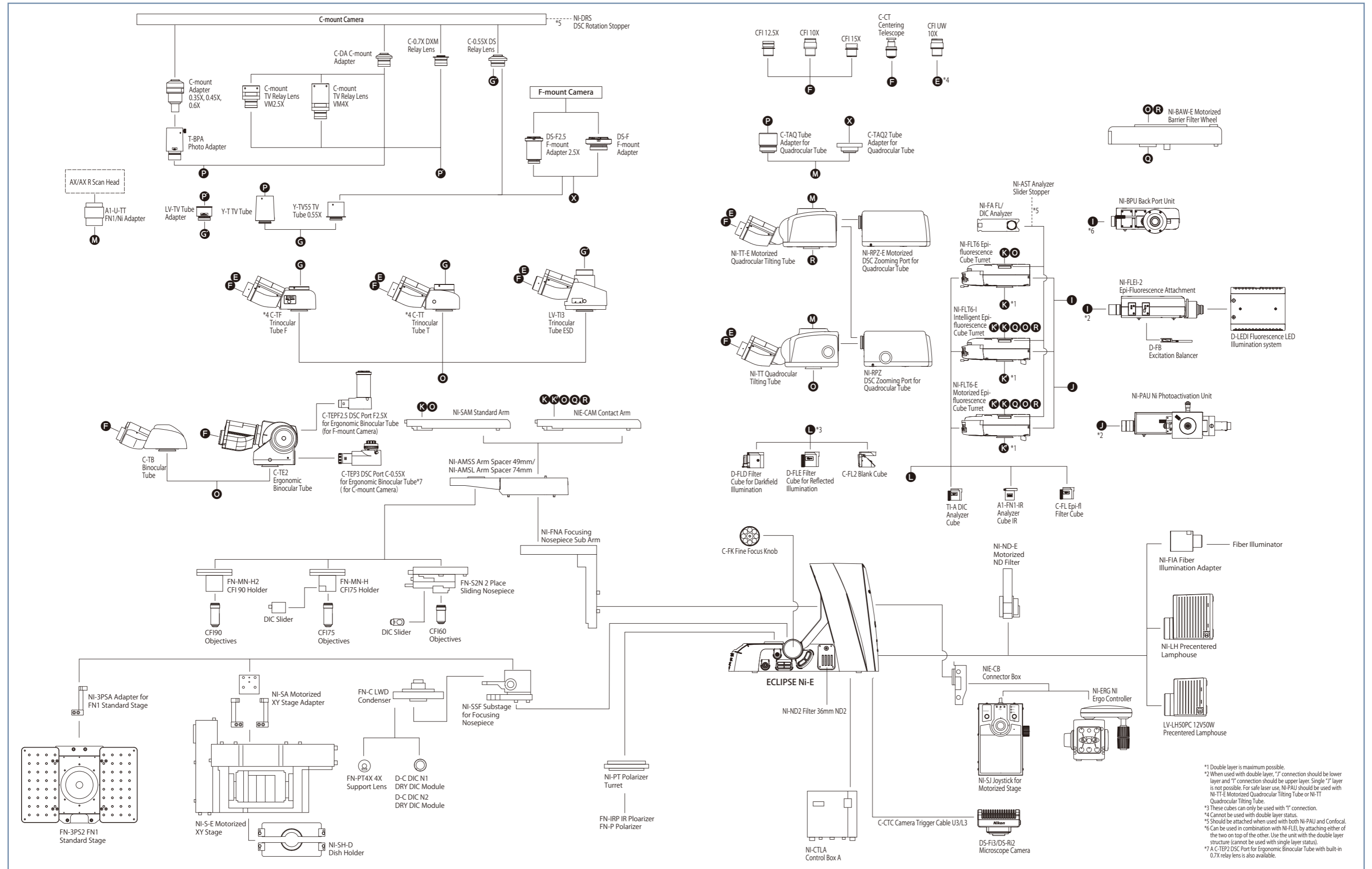
Configured with an ergonomic binocular tube and DSC port



System diagram: Ni-E focusing stage type

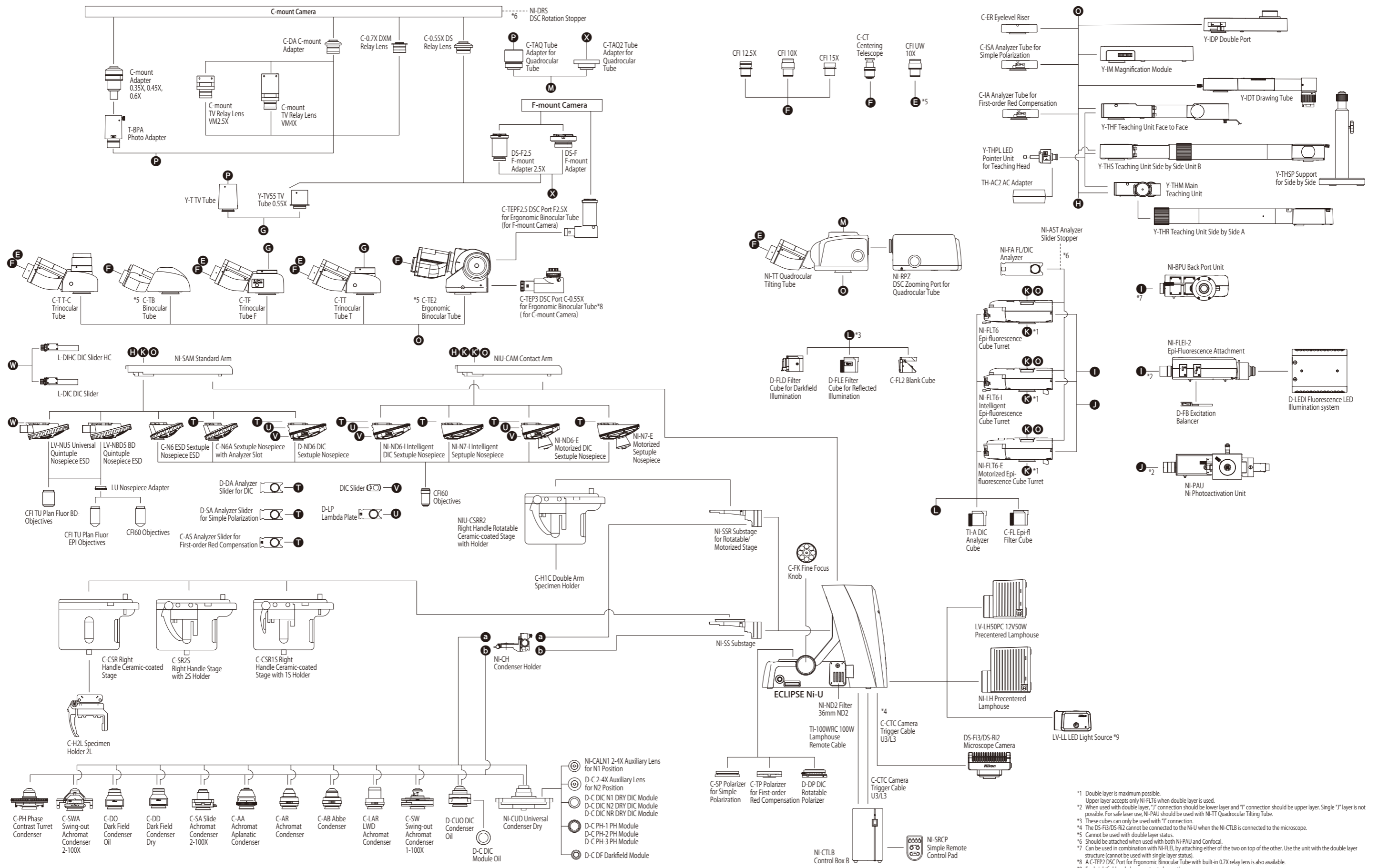


System diagram: Ni-E focusing nosepiece type



*1 Double layer is maximum possible.
 *2 When used with double layer, "J" connection should be lower layer and "I" connection should be upper layer. Single "J" layer is not possible. For safe laser use, NI-PAU should be used with NI-TT-E Motorized Quadrocular Tilting Tube or NI-TT Quadrocular Tilting Tube.
 *3 These cubes can only be used with "I" connection.
 *4 Cannot be used with double layer status.
 *5 Should be attached when used with both NI-PAU and Confocal.
 *6 Can be used in combination with NI-FLEI, by attaching either of the two on top of the other. Use the unit with the double layer structure (cannot be used with single layer status).
 *7 A C-TEP2 DSC Port for Ergonomic Binocular Tube with built-in 0.7X relay lens is also available.

System diagram: Ni-U



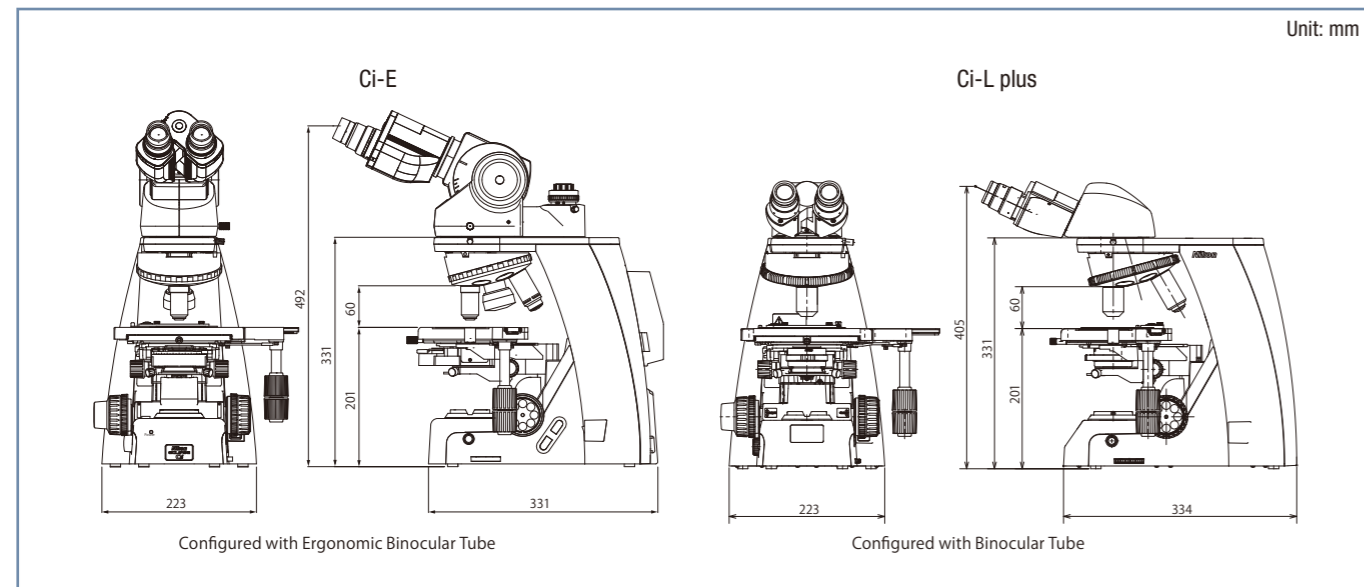
*1 Double layer is maximum possible.
 *2 Upper layer accepts only NI-FLT6 when double layer is used.
 *3 When used with double layer, "J" connection should be lower layer and "I" connection should be upper layer. Single "J" layer is not possible. For safe laser use, NI-PAU should be used with NI-TT Quadrocular Tilting Tube.
 *4 These cubes can only be used with "I" connection.
 *5 The DS-Fi3/DS-Ri2 cannot be connected to the Ni-U when the NI-CTLB is connected to the microscope.
 *6 Cannot be used with double layer status.
 *7 Should be attached when used with both NI-PAU and Confocal.
 *8 Can be used in combination with NI-FLEI, by attaching either of the two on top of the other. Use the unit with the double layer structure (cannot be used with single layer status).
 *9 For brightfield and phase contrast observation.

Ci Specifications

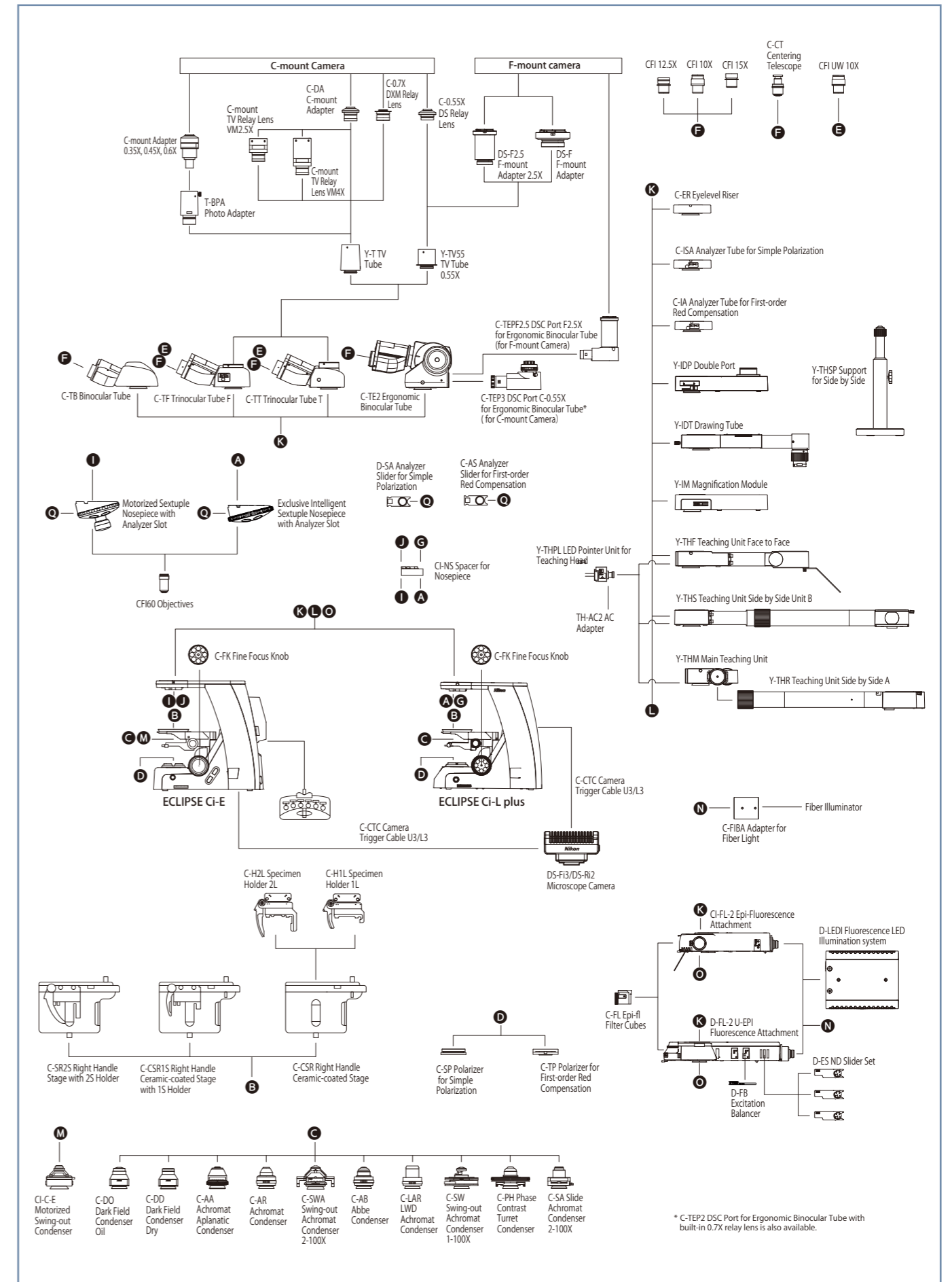
		Ci-E	Ci-L plus
Main body	Optical system	CFI60 Infinity Optical System	
	Illumination	High luminescent White LED Illuminator (Eco-illumination)	
		Automatic intensity reproduction function	Light Intensity Management (LIM) feature for auto intensity reproduction, with ECO mode*1 and Sleep mode*2
	Controls	Image capture button	
		Nosepiece rotating buttons Remote control pad	—
Eyepieces (F.O.V. mm)	Sleeve diameter ϕ 30mm · CFI 10X (22) · CFI 12.5X (16) · CFI 15X (14.5) · CFI UW 10X (25)		
Focusing	Coaxial Coarse/Fine focusing, Focusing stroke: 30 mm, Coarse: 9.33 mm/rotation, Fine: 0.1 mm/rotation, Minimum reading: 1 μ m Coarse motion torque adjustable, Refocusing function		
Tubes	F.O.V. 22 mm	· C-TB Binocular Tube · C-TE2 Ergonomic Binocular Tube (Eyepiece:Port=100:0, 50:50 via optional C-TEP2 DSC Port, C-TEP3 DSC Port C-0.55X or C-TEPF2.5 DSC Port F2.5X) Inclination angle: 10-30 degree, Extension: up to 40 mm	
	F.O.V. 25 mm	· C-TF Trinocular Tube F (Eyepiece:Port=100:0, 0:100) · C-TT Trinocular Tube T (Eyepiece:Port=100:0, 20:80, 0:100)	
Nosepieces	· Motorized Sextuple Nosepiece with Analyzer Slot (Included with Ci-E) Switching between two objectives function*3	· Exclusive Intelligent Sextuple Nosepiece with Analyzer Slot (Included with Ci-L plus)	
Stages	Cross travel 78 (X) \times 54 (Y) mm, with vernier calibrations, stage handle height and torque adjustable for all stages · C-SR2S Right Handle Stage with 2S Holder · C-CSR1S Right Handle Ceramic-coated Stage with 1S Holder · C-CSR Right Handle Ceramic-coated Stage (C-H1L Specimen Holder 1L and C-H2L Specimen Holder 2L are optional)		
Condensers (NA)	Motorized	· CI-C-E Motorized Swing-out Condenser (0.90/0.22) Focusing stroke: 27 mm	
	Manual	Focusing stroke: 27 mm · C-AB Abbe Condenser (0.90) · C-AR Achromat Condenser (0.80) · C-DO Darkfield Condenser Oil (1.20-1.43) · C-DD Darkfield Condenser Dry (0.80-0.95) · C-PH Phase Contrast Turret Condenser (0.90) · C-AA Achromat/ Aplanat Condenser (1.40) · C-SA Slide Achromat Condenser 2-100X (0.90) · C-SW Swing-out Achromat Condenser 1-100X (0.90/0.11) · C-SWA Swing-out Achromat Condenser 2-100X (0.90/0.22) · C-LAR LWD Achromat Condenser (0.65)	
Observation methods*4	Brightfield, Epi-fluorescence, Darkfield, Phase contrast, Simple polarizing, Sensitive color polarizing		
Epi-fluorescence attachment	· CI-FL-2 Epi-fluorescence Attachment (4 filter cubes mountable) · D-FL-2 U-EPI Fluorescence Attachment (6 filter cubes mountable, Noise Terminator mechanism)		
Epi-fluorescence light source	· D-LED1 Fluorescence LED Illumination system (32W) · C-HGFI/HGFIE HG Precentered Fiber Illuminator (130W)		
Power consumption	13W (Brightfield configuration)		5W (Brightfield configuration)
Weight (approx.)	15.4 kg (Binocular standard set)		13.3 kg (Binocular standard set)

*1 Energy saving feature that turns off the illumination and LCD to put it into a low power consumption state (sleep mode) after a certain period of inactivity.
*2 Standby state with low power consumption, though it is always energized while the dedicated AC adapter is connected.
*3 Settings with the remote control pad are required.
*4 Optional accessories are required for observations other than brightfield.

Ci Dimensional Diagram



Ci System Diagram



The Digital Sight series and Imaging Software NIS-Elements are not for clinical diagnostic use.

Company names and product names appearing in this brochure are their registered trademarks or trademarks.
N.B. Export of the products* in this brochure is controlled under the Japanese Foreign Exchange and Foreign Trade Law.
Appropriate export procedure shall be required in case of export from Japan.
*Products: Hardware and its technical information (including software)
Monitor images are simulated.



WARNING

TO ENSURE CORRECT USAGE, READ THE CORRESPONDING MANUALS CAREFULLY BEFORE USING YOUR EQUIPMENT.

Specifications and equipment are subject to change without any notice or obligation on the part of the manufacturer. September 2021 ©2011-21 NIKON CORPORATION



NIKON CORPORATION

Shinagawa Intercity Tower C, 2-15-3, Konan, Minato-ku, Tokyo 108-6290, Japan
phone: +81-3-6433-3705 fax: +81-3-6433-3785
<https://www.healthcare.nikon.com/en/>

ISO 14001 Certified
for NIKON CORPORATION

Nikon Instruments Inc.

1300 Walt Whitman Road, Melville, N.Y. 11747-3064, U.S.A.
phone: +1-631-547-8500; +1-800-52-NIKON (within the U.S.A. only)
fax: +1-631-547-0299

<https://www.microscope.healthcare.nikon.com/>

Nikon Europe B.V.

Tripolis 100, Burgenweeshuispad 101, 1076 ER Amsterdam, Netherlands
phone: +31-20-7099-0000 fax: +31-20-7099-298

https://www.microscope.healthcare.nikon.com/en_EU/

Nikon Instruments (Shanghai) Co., Ltd.

CHINA phone: +86-21-6841-2050 fax: +86-21-6841-2060
(Beijing branch) phone: +86-10-5831-2028 fax: +86-10-5831-2026
(Guangzhou branch) phone: +86-2-3882-0551 fax: +86-2-3882-0580
https://www.microscope.healthcare.nikon.com/zh_CN/

Nikon Canada Inc.

CANADA phone: +1-905-625-9910 fax: +1-905-602-9953

Nikon France, Succursale de Nikon Europe B.V.

FRANCE phone: +33-1-4516-4516 fax: +33-1-4516-4505

Nikon Deutschland, Zweigniederlassung der

Nikon Europe B.V.

GERMANY phone: +49-211-9414-888 fax: +49-211-9414-322

Nikon Italy, Branch of Nikon Europe B.V.

ITALY phone: +39-055-300-9601 fax: +39-055-300-993

Nikon Europe B.V., Amsterdam, Zweigniederlassung

Schweiz (Egg/ZH)

SWITZERLAND phone: +41-43-277-2867 fax: +41-43-277-2861

Nikon UK, Branch of Nikon Europe B.V.

UNITED KINGDOM phone: +44-208-247-1717 fax: +44-208-541-4584

Nikon Österreich, Zweigniederlassung der Nikon Europe B.V.

AUSTRIA phone: +43-1-972-6111 fax: +43-1-972-6111-40

Nikon Singapore Pte Ltd

SINGAPORE phone: +65-6559-3651 fax: +65-6559-3668

Nikon Australia Pty Ltd

AUSTRALIA phone: +61-2-8767-6900

Nikon Instruments Korea Co., Ltd.

KOREA phone: +82-2-6288-1900 fax: +82-2-555-4415