



Superior optics, high magnification and wide zoom range designed in industrial grade aluminium housing for Full High Definition image quality, where and how you need it!



- Superior 30:1 zoom optics with auto-focus
- On board easy-to-access lens- and camera controls
- Large practical working distance
- Fully flexible and configurable with different stands and mounts
- Full HD 1080p, 60 fps for lag-free magnified working
- Options include ESD-protected housing and a built-in laser pointer



"Efficient, Ergonomic, endlessly versatile!"

Designed for ergonomic use

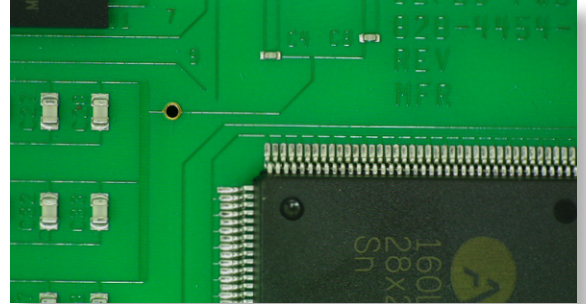
Inspectis F30s provides relief to eyes, neck and shoulders through the unique ergonomic design, built-in laser pointer and 230 mm free working distance. By allowing operators to sit comfortably in a good working position, their inspection tasks can be carried out more efficiently.



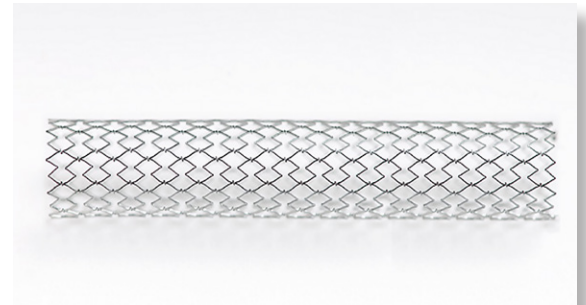
Thanks to its fast optics and large image sensor, F30s provides an excellent image of inspecting object, especially solder joints on electronic PCBs, highly reflective metallic parts and assemblies with minimum glare and reflections.



The system's standard optics with 1.9 - 56x magnification (24" monitor) are comparable to common inspection microscopes. If further magnification is needed, a wide range of +1, +2, +3 and +5 diopter Macro Lenses can be added to magnify up to 110x.



Electronics PCB, x6 Zoom, 11.5x Mag.



Medtech, x30 Zoom with +5 Macro, 110x Mag.



Micro mechanis, x10 Zoom, 19x Mag.



Forensic, x25 Zoom, 48x Mag.

Connect F30s digital microscope to a Full HD display or your PC via Inspectis' plug-&-play USB3.0 converter and take advantage of the astonishing image resolution, high contrast, true colours at 1:30x zoom range in your optical inspection work.

” Optimized for inspection and repair of electronic PCBs ”

Making inspection reliable

F30s offers true ease of use with minimal interaction needed with controls and settings. All basic parameters such as zoom, brightness and colour levels can be controlled by the user through on-board buttons on top of the device.

When required, the optional Advanced Remote Control allows the excellence of the imaging system to be exploited further and additional useful inspection aids to be selected. To further simplify operations, selected controller functions can be controlled by a foot pedal.



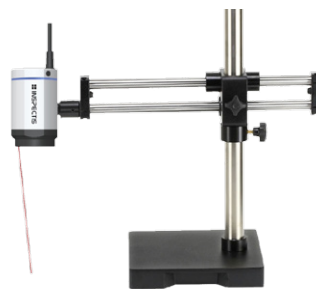
- 1:30x Zoom Optics
- AutoFocus
- On board Controls
- Aluminium Housing
- HDMI Digital Output
- Red Laser Pointer
- Modular Design
- ESD Protected
- Stable Stands
- USB3.0 Converter
- Wide range of accessories
- Advanced Remote Control



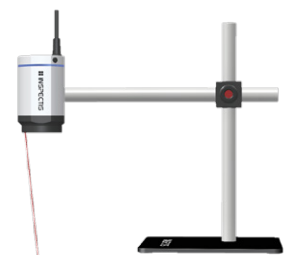
Modular design of F30s allows easy configuration of your optical inspection system with a wide range of stands and mounts according to your needs.



F30s with Articulated Boom Stand



Double-arm Boom Stand



Single-arm Boom Stand

”Designed according to industry standards”

System Specifications

System:

Video Output	Full HD 1080/59,94p switchable to Full HD 1080/50p
Imager	3,2M pixels. 1920(H) x 1080(V) 16:9 format progressive scan CMOS image sensor
Pixel Size (resolution)	2,5 µm x 2,5 µm
I/O Ports	HDMI video output, 5P MiniDin Power input, 8P MiniDin External Remote Control
Onboard Control	Zoom, Iris, Auto Focus on/off, White Balance
External Remote Control	Zoom, Iris, Manual/Auto Brightness, Manual/Auto Focus, White Balance, Picture Quality Mode, Display Text, Crosshairs overlay, Image Rotate, Image Freeze, Memory Save/Recall (2 pcs), Foot-switch, Video Output Frame Rate
Illumination	External RingLight
Storage Environment	-20° - +60°C, 20 - 95% RH, non-condensing
Operating Environment	-5° - +40°C, 20 - 95% RH, non-condensing
Size, Weight	φ 86,5 x 137mm exclusive cable. 1,1 kg. excluding stand

Optics:

Lens system	x30 Optical Zoom with Auto Focus and Iris Control
Working distance	228 mm (from lens to object at maximum zoom factor)
Magnification x1-x30 zoom factor	~ 1,9x - ~ 56x on 24" monitor (~ 110x with +5 macro lens)
Field of View at x1-x30 zoom factor	~ 270 x 151,9 mm to ~ 9,3 x 5,2 mm (~ 4,7 x 2,6mm with +5 lens)
Laser pointer	Class 1 red LED laser with automatic through-optics alignment



Ordering numbers Inspection Systems:

Item name	Order No.
Inspectis F30s, Full HD 1080p Modular Digital Inspection Microscope, HDMI	HD-013
With Antistatic housing	* -E
With Laser Pointer	* -L

Lens protection filter, 67mm	HD-098
RingLight White LED with detachable diffuser	HD-024
Polarization filter for Ring Light	HD-024-P-U
RingLight UV 365-375nm wavelength LED	HD-025
Extension cable (2.0m) for Ring Light	HD-024-C
XY Floating Board, Antistatic	HD-028
Tilt Board, Antistatic	HD-029
Aluminium carrying case	HD-040
Full HD to USB3.0 converter with software Light	HD-031
Full HD to USB3.0 converter with software Pro	HD-032
Full HD HDMI to USB3.0 converter	HD-033
Single-arm Boom stand	HD-060
Single-arm Boom stand, Antistatic	HD-060-E
Double-arm Boom Stand	HD-070
Articulated-arm Boom Stand	HD-080
Rack-&-Pinion Fine Focusing module	HD-090

Ordering numbers optional Accessories:

Remote Camera Control with Advanced Adjustments for Inspectis Microscopes	HD-020
Foot switch for Remote Camera Control	HD-027
Macro lens +1 diopter, 67mm	HD-036
Macro lens +2 diopter, 67mm	HD-037
Macro lens +3 diopter, 67mm (Achromatic)	HD-038
Macro lens +5 diopter, 67mm (Achromatic)	HD-039



**NIKON METROLOGY
STRATEGIC PARTNER**

Distributor:

Nikon Metrology NV | Europe
www.nikonmetrology.com

Reseller

INSPECTIS

Quality of Inspection

Inspectis Optical Systems
Stockholm, Sweden

www.inspect-is.com
info@inspect-is.com