

# NanoZoomer<sup>®</sup> S60v2MD

## Slide scanner system

C16600-21MDEU

Scan various size slides with  
this regulatory compliant model



### Multi-slide Type Scanning

Up to  
60 standard-sized slides  
or 30 mega-sized slides

### High- speed Scanning

60 s (20× mode)  
75 s (40× mode)

\* When it scans an area of  
15 mm × 15 mm square with 5 focus points.

### Selectable Scanning Modes

Fully and semi-  
Automatic scanning  
available

### Low- operational Workload

Assistant for image  
quality check

### Regulatory Compliant

IVDR (EU)  
UKCA (UK)  
IVDO (CH)

**HAMAMATSU**

PHOTON IS OUR BUSINESS

# Flexible multi-slide scanning options at constant high-speed

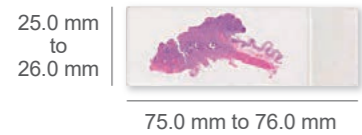
## Multi-slide type handling

The NanoZoomer® S60v2MD has three slots available, which allows to scan both standard and mega-sized slides in one batch.

### Standard-sized slide

Up to **60** slides

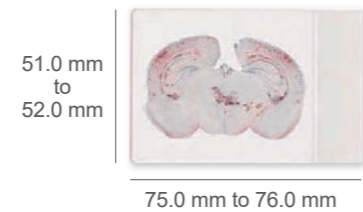
20 slides × 3 cassettes



### Mega-sized slide

Up to **30** slides

10 slides × 3 cassettes



Users can use up to three slots using standard or mega-sized slides interchangeably based on their preferences.

### Example

Scanning 40 standard-sized slides and 10 mega-sized slides at one time.



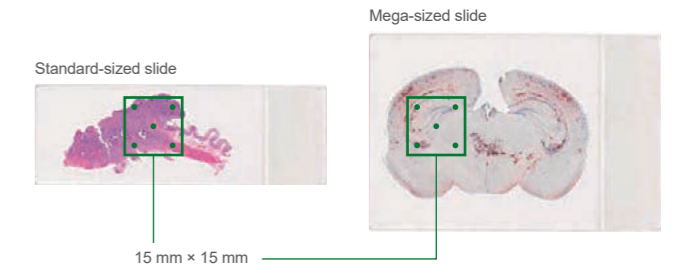
## High-speed scanning

Achieve these outstanding scan timings on both standard and mega-sized slides.

Approx. **20× mode** **60** seconds

Approx. **40× mode** **75** seconds

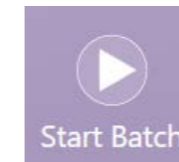
These scan timings can be achieved when it scans an area of 15 mm × 15 mm square with 5 focus points.



## Improved scanning workflow solutions

Choose your preferred scanning mode.

### Fully-Automatic scanning



All scanning processes work automatically.

### Semi-Automatic scanning



Option to set-up scanning conditions such as the scan area or resolution and to assign profiles for each slide.

## Maintain an optimized system condition



Optimum image quality and color balance are maintained by the operational software "NZAcquireMD".



## More productive and convenient

### ► Profile functions

#### • Scan profile

Save scan conditions such as scan area and sample size threshold for tissue recognition.



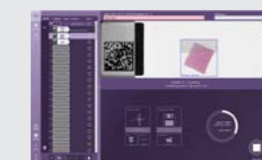
#### • Output profile

You can choose multiple files for saving an image.

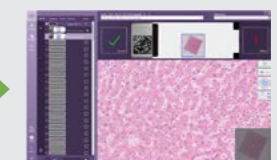


### ► Quality check

QC (Quality Check) mode is available to allow users to check image quality before finalizing Whole Slide Imaging.

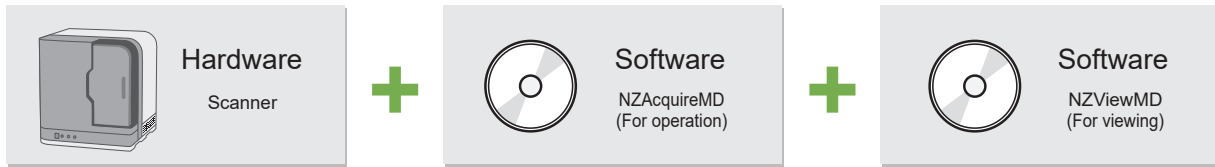


Scanning



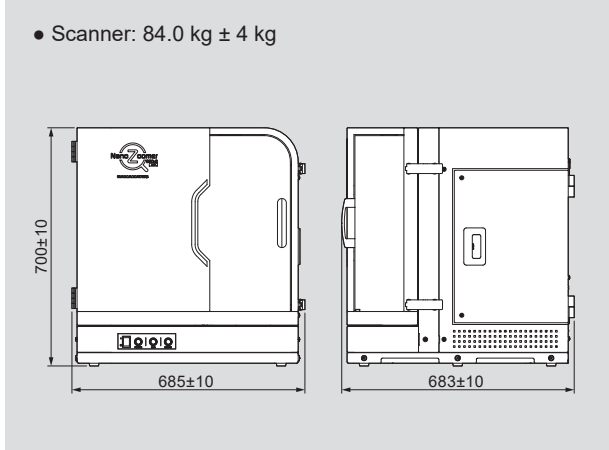
Checking

## System configuration



## Dimensional outlines (Unit: mm)

- Scanner: 84.0 kg  $\pm$  4 kg



## Specifications

Product name		NanoZoomer <sup>®</sup> S60v2MD Slide scanner system
Product number		C16600-21MDEU
Scanning speed *1	20 $\times$ mode	Approx. 60 s
	40 $\times$ mode	Approx. 75 s
Objective lens		20 $\times$ N.A. 0.75 User can select 20 $\times$ or 40 $\times$ mode at start of scanning
Compatible glass slides		25.0 mm to 26.0 mm $\times$ 75.0 mm to 76.0 mm (Thickness 0.9 mm to 1.2 mm) 51.0 mm to 52.0 mm $\times$ 75.0 mm to 76.0 mm (Thickness 0.9 mm to 1.2 mm)
Slide loader	Standard-sized slide *2	Up to 60 slides (20 slides $\times$ 3 cassettes) *3
	Mega-sized slide *2	Up to 30 slides (10 slides $\times$ 3 cassettes) *3
Scanning resolution	20 $\times$ mode	Approx. 0.46 $\mu$ m/pixel
	40 $\times$ mode	Approx. 0.23 $\mu$ m/pixel
Focusing method		Pre-Focus map
Z-stack feature		Included
Image compression		JPEG compression
Readable barcodes	1D Barcodes	Code 39, Code 128, Interleaved 2 of 5, Codabar, EAN-8 and UPC-E
	2D Barcodes	DataMatrix (ECC200) QR code (QR Code Model-1) QR Code Model-2
Power supply		AC 100 V to AC 240 V
Power consumption (Scanner only)		Approx. 120 VA

\*1 When it scans an area of 15 mm  $\times$  15 mm square with 5 focus points.

\*2 Standard-sized is a single slide, mega-sized is a double-width, large slide.

\*3 Up to 3 cassettes can be set with combination of standard and mega-sized slides.

## Intended Use

NanoZoomer<sup>®</sup> S60v2MD Slide scanner system ("NanoZoomer<sup>®</sup> System") is an automated digital slide creation, viewing, and management system. The NanoZoomer<sup>®</sup> System is intended for in vitro diagnostic use as an aid to the pathologist to review and interpret digital images of surgical pathology slides prepared from formalin-fixed paraffin-embedded ("FFPE") tissue. The NanoZoomer<sup>®</sup> System is not intended for use with frozen section, cytology, or non-FFPE hematopathology specimens.

The NanoZoomer<sup>®</sup> System comprises the Scanner and the NZViewMD Software. The NanoZoomer<sup>®</sup> System is for creation and viewing of digital images of scanned glass slides that would otherwise be appropriate for manual visualization by conventional light microscopy. It is the responsibility of a qualified pathologist to employ appropriate procedures and safeguards to assure the validity of the interpretation of images obtained using NanoZoomer<sup>®</sup> System.

- NanoZoomer is a registered trademark of Hamamatsu Photonics K.K. (EU, Japan, UK, USA)
- The product and software package names noted in this brochure are trademarks or registered trademarks of their respective manufacturers.
- Subject to local technical requirements and regulations, availability of products included in this brochure may vary. Please consult with your local sales representative.
- The product described in this brochure is designed to meet the written specifications, when used strictly in accordance with all instructions.

© 2022 Hamamatsu Photonics K.K.

## HAMAMATSU PHOTONICS K.K. [www.hamamatsu.com](http://www.hamamatsu.com)

### Manufacturer

**HAMAMATSU PHOTONICS K.K., Systems Division**  
**Joko Factory**  
 812 Joko-cho, Higashi-ku, Hamamatsu-City, Shizuoka-Pref.  
 431-3196, Japan  
 Telephone: (81)53-431-0124, Fax: (81)53-433-8031  
 E-mail: export@sys.hpk.co.jp

### Authorised representative

**HAMAMATSU PHOTONICS DEUTSCHLAND GMBH**  
 EC REP Arzbergerstr. 10, 82211 Herrsching am Ammersee, Germany  
 E-mail: pms-med@hamamatsu.eu

**HAMAMATSU PHOTONICS UK LIMITED**  
 UK REP 2 Howard Court, 10 Tewin Road, Welwyn Garden City,  
 Hertfordshire, AL7 1BW, UK  
 E-mail: pms-med@hamamatsu.co.uk

**HAMAMATSU PHOTONICS FRANCE S.A.R.L. Swiss Office**  
 CH REP Dornacherplatz 7, 4500 Solothurn, Switzerland  
 E-mail: swiss@hamamatsu.ch

### Importers

**HAMAMATSU PHOTONICS DEUTSCHLAND GMBH**  
 Arzbergerstr. 10, 82211 Herrsching am Ammersee, Germany  
 Telephone: (49)8152-375-0, Fax: (49)8152-265-8  
 E-mail: info@hamamatsu.de

**HAMAMATSU PHOTONICS FRANCE S.A.R.L.**  
 19 Rue du Saule Trapu, Parc du Moulin de Massy, 91882 Massy Cedex, France  
 Telephone: (33)1 69 53 71 00, Fax: (33)1 69 53 71 10  
 E-mail: infos@hamamatsu.fr

**HAMAMATSU PHOTONICS NORDEN AB**  
 Torshamnsgatan 35 16440 Kista, Sweden  
 Telephone: (46)8-509 031 00, Fax: (46)8-509 031 01  
 E-mail: info@hamamatsu.se

**HAMAMATSU PHOTONICS ITALIA S.R.L.**  
 Strada della Moia, 1 int. 6, 20044 Arese (Milano), Italy  
 Telephone: (39)02-93 58 17 33, Fax: (39)02-93 58 17 41  
 E-mail: info@hamamatsu.it