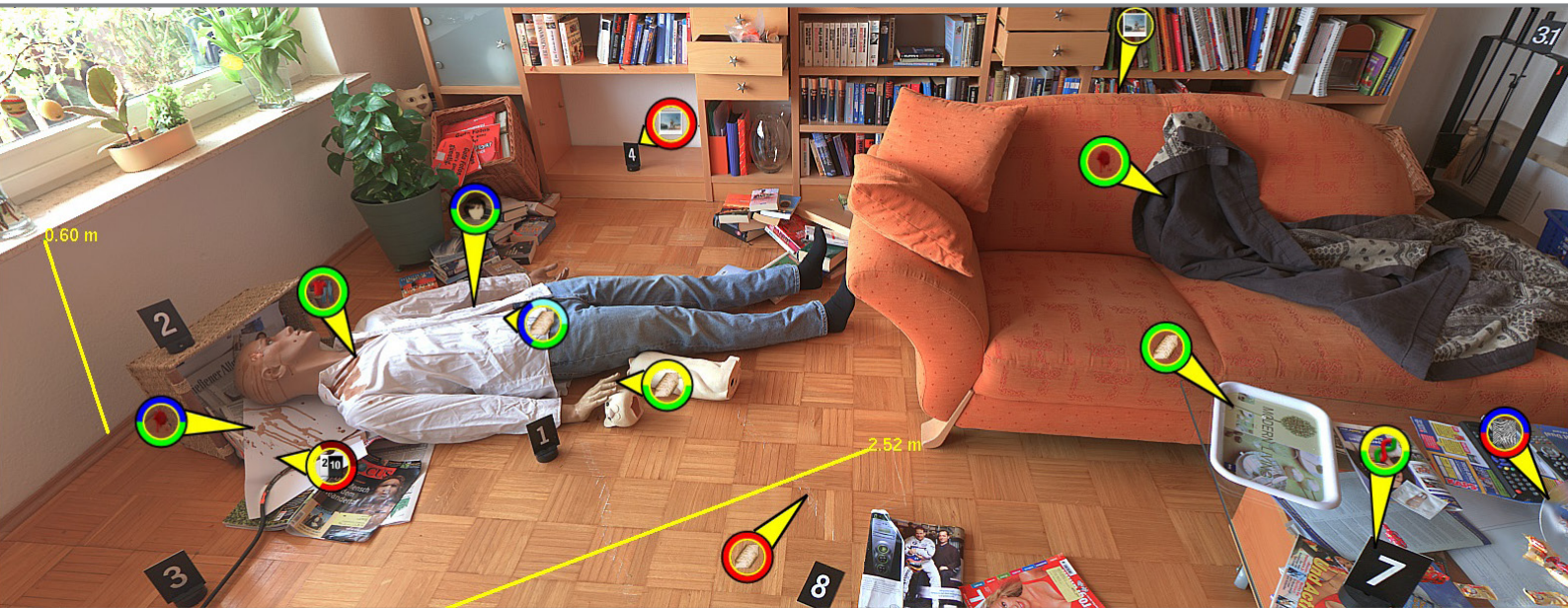


SceneCenter® forensic
Release 2.0

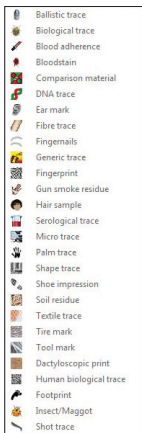


Visual Crime Scene Documentation

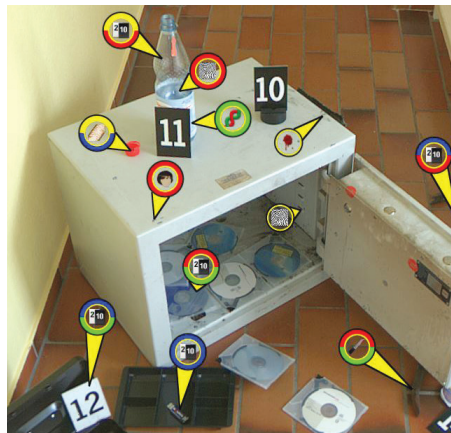
- > **Comprehensive overview**
of a crime scene with full spherical images.
- > **Efficient collaboration**
offering 'Live Time Forensics' to investigation teams by multi-user capability with project-, role- and rights-management.
- > **Complete documentation**
covering evidences, traces, investigation-analysis and floor plans; as well as generic photographic-, audio- and video -data.
- > **Unlimited access to a scene**
including on demand 3D measurement functionality.



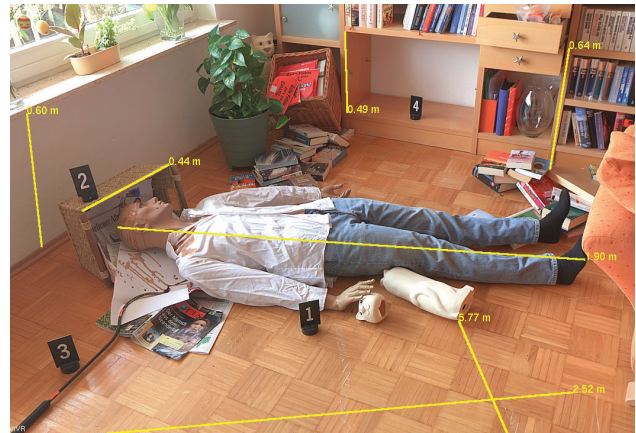
Manage, document and present a crime scene



Types of data



Hotspots refer to further information



3D measurement on demand

SceneCenter® forensic

The intelligent software solution to document, manage and present a crime scene.

Image based Documentation

The fundamental concept of SceneCenter® forensic is to create complete crime scene reports on the basis of full spherical images (360° x 180°), captured by the SceneCam®. Within the software, all types of information, such as documented evidences, traces and other digital documents get visually located within the spherical imagery. As a result, SceneCenter® forensic offers intuitive and consistent information-access for all shareholders from one single source.

Navigation and Survey

For an easy orientation, maps and floor plans can be integrated to build a virtual walkthrough: with a simple click on an icon the user switches between captured scenes. To support spatial orientation as well as to answer questions of distances and sizes, SceneCenter® forensic allows on demand surveying of accurate 3D measurements directly within the images.

Flexible Reporting

To communicate the information to 3rd party and to take the documentation to court, visual reports can be published on demand into a document file, a screencast or as an interactive SceneCase®.

Technical Details

Multi-user

SceneCenter® Master Server is an integrated solution which enables a large number of users to work on an investigation case concurrently. It is designed to run within a Microsoft Windows Server environment.

Single-user

SceneCenter® Standalone is designed and optimized for one single user and can be used mobile. It operates on Microsoft Windows 7, 8 and 10 platforms.

Security

Dedicated project-, role-, and rights management support efficient exchange of information whilst assuring data protection.

3D Measurement

Accurate measurement of lengths and sizes directly within the full spherical images.

Reporting

Publishing of the complete documentations as Microsoft Word Document, screencast or interactive SceneCase®.

Integration

The complete documentation workflow - from image capturing via SceneCam®, multiuser collaboration and expert knowledge integration to the final presentation - is fully integrated.

