



DIGITAL SIGHT SERIES

Digital Cameras for  
Microscopes

# Introducing a new all-in-one, High-definition camera model in the Nikon Digital Sight series.


The new Digital Sight 10 camera makes possible switching between color and monochrome image capture at very high definition of 23.9 mega-pixels or 6K resolution. Choose the ideal microscope camera to suit every application, including the Digital Sight 1000, which directly displays microscope images on a full HD display without a PC, and the DS-Qi2, a monochrome high-sensitivity model suited to fluorescence photography.

## Four camera options covering two computing platforms

Microscope Camera <b>Digital Sight 1000</b>	Microscope Camera <b>DS-Fi3</b>	Microscope Camera <b>Digital Sight 10</b>	Monochrome Microscope Camera <b>DS-Qi2</b>
			
→ P.3	→ P.4	→ P.6	→ P.7
2.0 megapixel Color Full HD	5.9 megapixel Color High-resolution	23.9 megapixel Color/Mono-chrome High-resolution	16.25 megapixel Mono-chrome Cooled
Frame rate 30 fps (1920×1080)	Frame rate 15 fps (2880×2048), 30 fps (1440×1024)	Frame rate 9 fps (6000×3984), 66 fps (1920×1080)	Frame rate 6 fps (4908×3264), 45 fps (1636×1088)
Max recordable pixels 1920×1080	Max recordable pixels 2880×2048	Max recordable pixels 6000×3984	Max recordable pixels 4908×3264
C-Mount	C-Mount	F-Mount	F-Mount

### Using a tablet PC


Imaging software  
**NIS-Elements L**  
Advanced Solutions for your Imaging World



→ P.10

### Using a desktop PC

Imaging software  
**NIS-Elements F D Br Ar**  
Advanced Solutions for your Imaging World

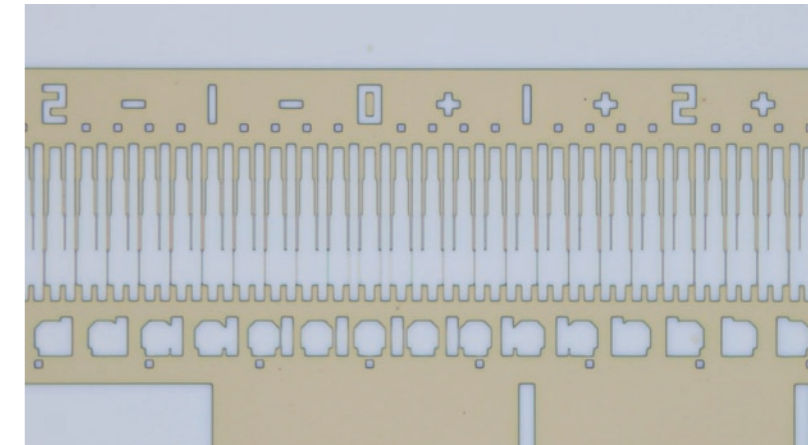
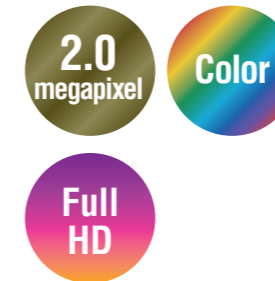


→ P.8

Only NIS-Elements L and F are compatible with Digital Sight 1000

## Microscope Camera

# Digital Sight 1000



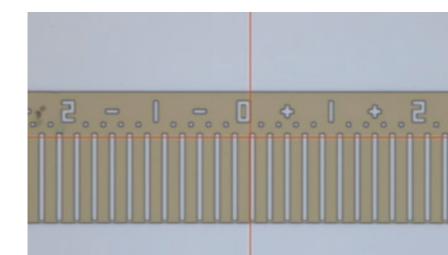
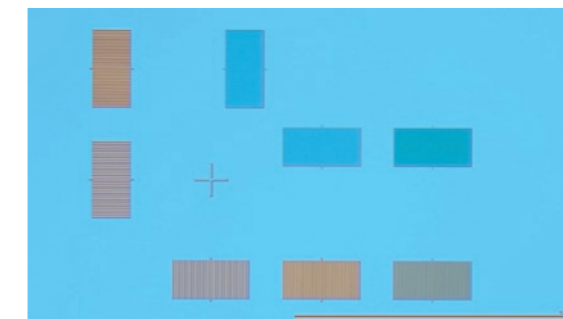
Semiconductor (IC wafer)  
(Objective: TU Plan Fluor 20x on Nikon Eclipse microscope)

## Low cost, Full HD Camera

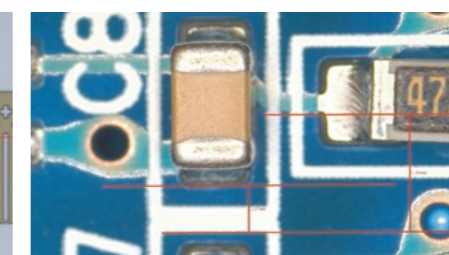
Equipped with a 2 megapixel CMOS image sensor, it can display, capture, and save full HD microscope images of 1920 x 1080 pixels at 30 frames / second.

## Easy operation on HDMI display

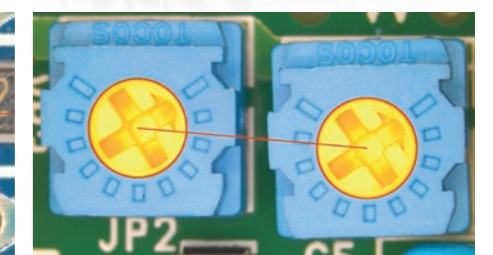
By connecting the microscope to a camera and HDMI monitor, movie and still images can be created, captured and data can be saved to an SD card. No PC connection is required to display scales and reticles, as well as to conduct simple measurements.



Cross Line (Line Display)



Perpendicular Distance Measurement

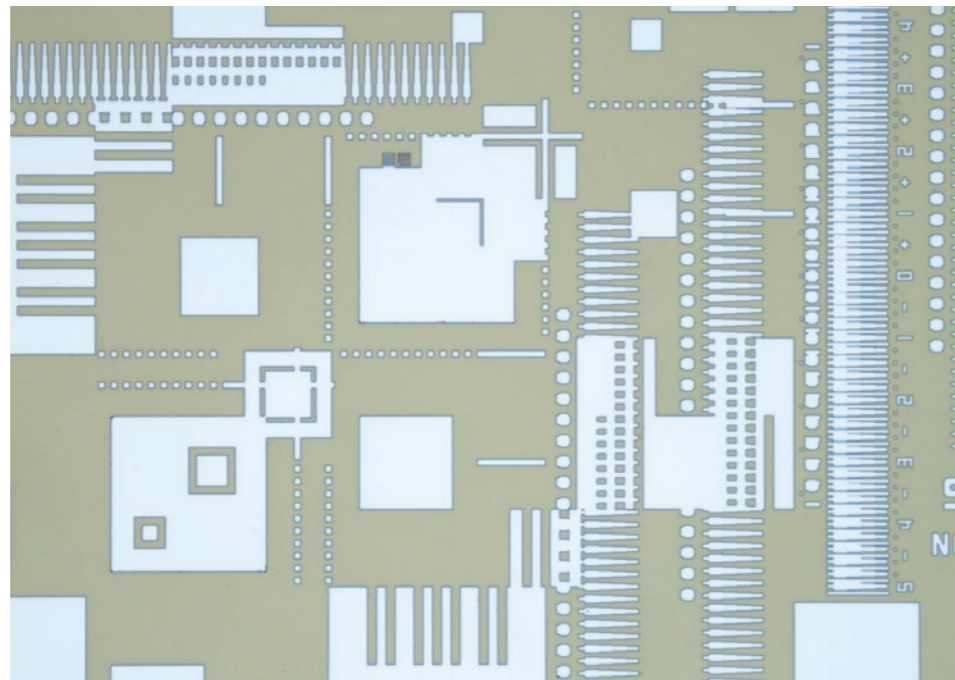


Circle Distance Measurement

### Main Features

- Image Comparison
- Circle Distance Measurement
- Parallel Line Measurement
- Polygon Display
- Measurement Calibration
- Scale Bar Display
- Reticle Display
- Angle Measurement
- Concentric Circles Measurement
- Freehand Line Display
- Rectangle Display
- Coordinate Display
- Scale Reticle Display
- Saving Measurement Result
- Perpendicular Distance Measurement
- Circle Display
- Line Display

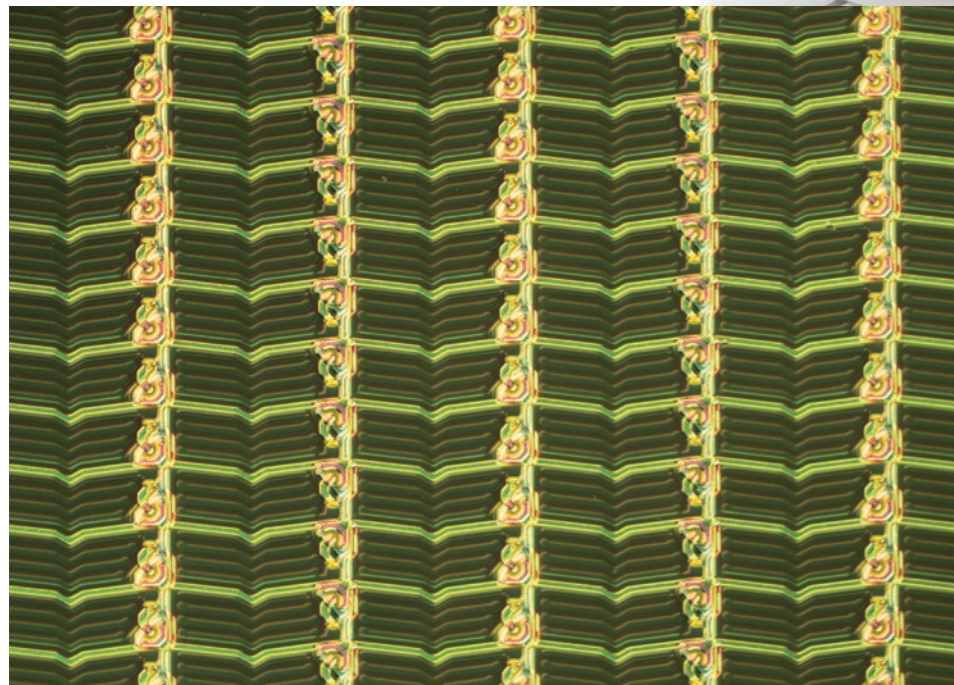
## Microscope Camera DS-Fi3



Semiconductor (IC wafer)  
(Objective: TU Plan Fluor BD 20x on Nikon Eclipse microscope)

## High-resolution images

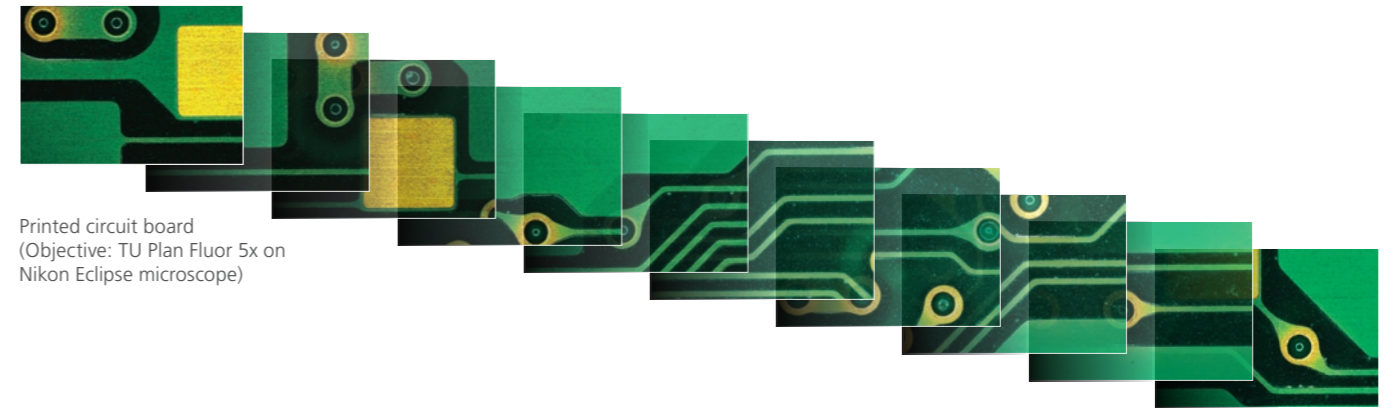
A CMOS high density 5.9 megapixel sensor produces high resolution images. The USB3.0 data transfer allows fast focusing with high resolution, and easy image capture in all types of observation contrast methods such as brightfield, darkfield, differential interference contrast, and phase contrast.



Liquid crystal panel  
(Objective: TU Plan Fluor 10x on Nikon Eclipse microscope)

## High-speed live display

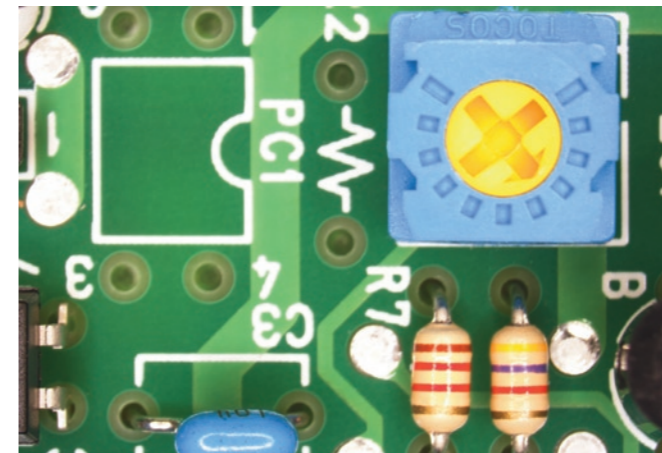
Fast USB3.0 data transfer means fast, smooth live updating of images for finding samples or focusing, even at full resolution.



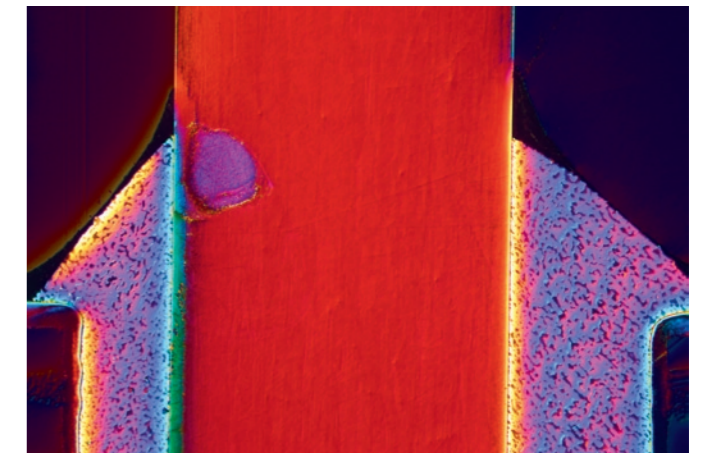
Printed circuit board  
(Objective: TU Plan Fluor 5x on Nikon Eclipse microscope)

## Superior color reproduction

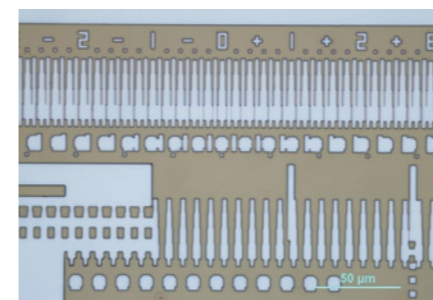
Nikon is well-known for outstanding and lifelike color reproduction, and developing superior algorithms for creating results that look like the actual samples. These algorithms are used in all of the color cameras in the digital sight lineup.



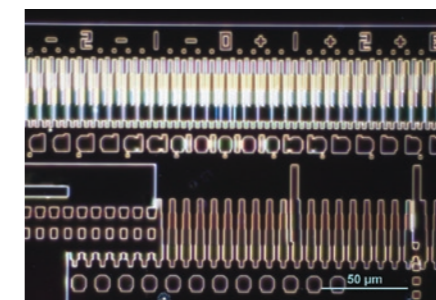
Printed circuit board  
(Stereo microscope + LED ring lights)



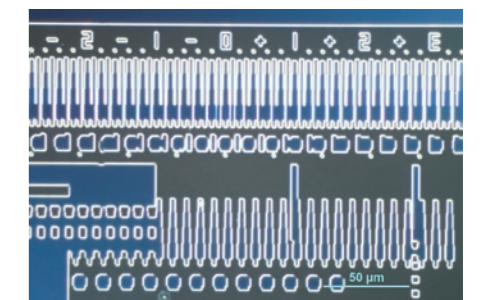
Printed circuit board (Connector)  
(Objective: TU Plan Fluor BD 10x on Nikon Eclipse microscope)



Semiconductor (IC wafer)  
(Objective: TU Plan Fluor BD 50x on Nikon Eclipse microscope)



Semiconductor (IC wafer)  
(Objective: TU Plan Fluor BD 50x on Nikon Eclipse microscope)



Semiconductor (IC wafer)  
(Objective: TU Plan Fluor BD 50x on Nikon Eclipse microscope)

## Camera Control

The DS-Fi3 interfaces with PC computers via a USB3.0 interface directly to the camera head, and uses NIS-Elements series software for image acquisition.

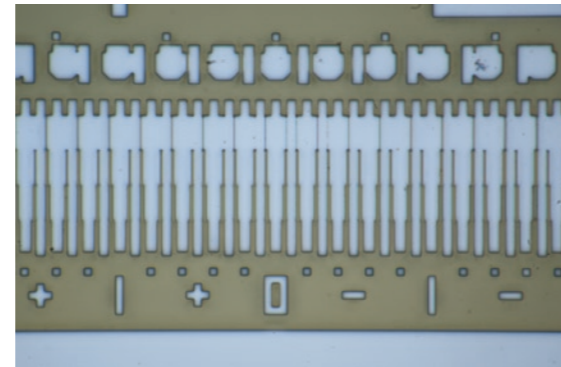
Covering a wide field of view at ultra-high definition 6K resolution. Achieves a one-shot, efficient image capture process.

## Microscope Camera Digital Sight 10



### High-definition observation

Digital Sight 10 enables unprecedented 6K ultra-high definition, capturing microscopic images at up to 6000 x 3984 pixels (23.9 megapixels).



Wafer (IC pattern) (Objective: TU Plan Fluor 100x)



### Before Digital Sight 10



### Digital Sight 10

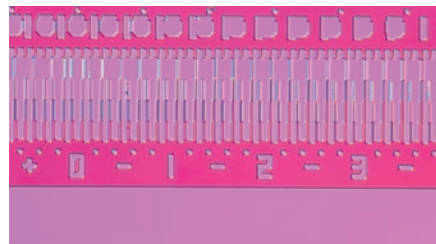


Resolution chart (Objective: TU Plan Fluor 10x)

## Photography with the natural colors seen through the microscope

Nikon is a leader in development of algorithms for reproducing color just as the eyes see it

The Digital Sight 10 models' image processing engine is based on extensive data accumulated over many years of developing microscope color digital cameras, resulting in perfect reproduction of the colors your eyes see in the microscope.



Left image: Semiconductor (IC wafer) (Objective: TU Plan Fluor BD 50x)  
Right image: Semiconductors (IC wafer) (Objective: TU Plan Fluor BD 20x)

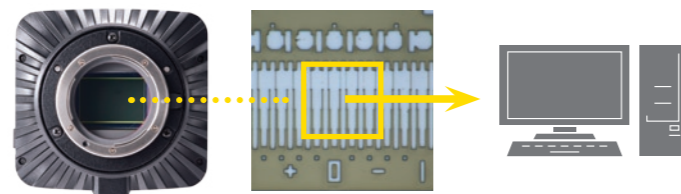


Example of combination with the LV150NA industrial microscope

## High-speed display

Digital Sight 10 is able to output a standard or a user definable Region of Interest (ROI) directly from the sensor area.

(Position and size limits on ROI are present in the camera, but images are cropped using the SDK to provide an unrestricted ROI to the user.)



Achieves up to approximately **357 fps**

(3x3 binning, 128x128 ROI, exposure time: 100 μs)



\*Digital Sight 10 adjusts image size in the vertical direction to enhance the frame rate above that of the DS-Ri2, Qi2, and Fi3 models.

Color and Monochrome shooting are both possible with one camera unit **During manual operation**

### Color mode

Inserting the color filter optimizes the image from 400 to 680 nm in color live display and capture modes



### Monochrome mode

Inserting the IR filter in place of the color filter now extends the IR imaging range from 400 to 850 nm in both live and capture modes.



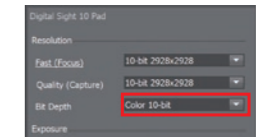
Electric switching function **During electronic operation (using the 1x electronic adapter)**

### Easy motorized filter switching

Easy switching between color and monochrome modes using the imaging software is possible by a motorized, hands-free process.

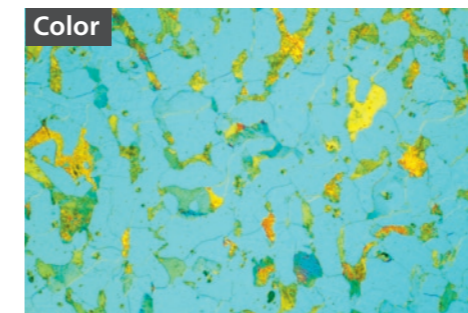


1x electronic adapter

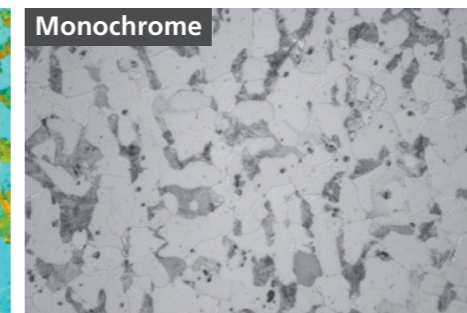


Switch with a single action in the imaging software

\*A 1x electronic adapter and a separate PC equipped with specialized imaging software, NIS-Elements, are required for automated filter change operation.



Metallic structure (aluminum) (Objective: TU Plan Fluor 50x)



Example of combination with the MA200 inverted metallurgical microscope

## Capture Low light fluorescence and Large Fields of View

Monochrome Microscope Camera

## DS-Qi2



### High sensitivity

**Detects even faint fluorescent signals**

7.3 μm pixels, high quantum efficiency, and very low read noise allow the DS-Qi2 to read in even faint fluorescent signals.

### High frame rate

**Fast focusing, even with fluorescent images**

With a high-sensitivity CMOS image sensor and USB 3.0-based data transfer, the DS-Qi2 enables high-speed live imaging and image capture at up to 45 fps (1636x1088 pixels).

### Low noise

**Acquires dim fluorescent signals with ultra-low noise**

Both 2.2 electrons read noise coupled with a large full-well capacity and 0.6 electrons dark current allow the acquisition of 14 bit fluorescence images with very little noise.

### Excellent linearity

**Reliable quantitative analysis made possible**

With a linearity error of ±1%, the DS-Qi2 is a superb tool for measuring intensities in fluorescence samples, including time-based intensity measurement and ratiometric measurement.

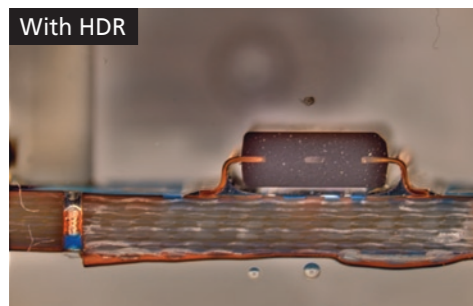
## Integration with Nikon's Software Imaging Platform

Nikon's universal software platform, NIS-Elements combines powerful image acquisition, analysis, visualization and data sharing tools. With fully customizable user interfaces and seamless integration of Nikon microscopes, cameras and a wide variety of peripheral devices, NIS-Elements can serve as a simple interface for photo-documentation or power complex, conditional workflows with automated imaging and analysis routines. The NIS-Elements platform features various packages and software modules to meet the needs of even the most challenging applications.

### HDR (High Dynamic Range) image acquisition

Ar Option Br D

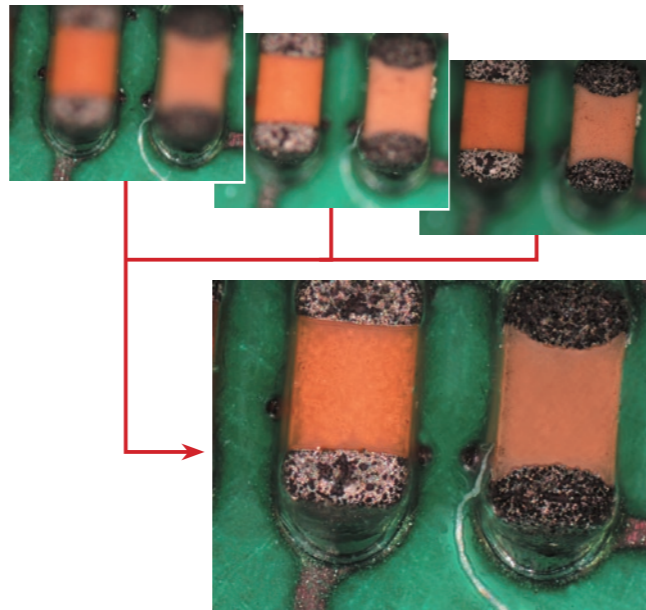
HDR creates an image with appropriate brightness in both the dark and bright regions in a sample by combining multiple images acquired with different exposure settings. It is also possible to create HDR image using multiple captured images.



### EDF (Extended Depth of Focus)

Option Ar Br D

Creates a single, all-in-focus image from images of differing focus. Such images can now be created by simply turning the focus knob.

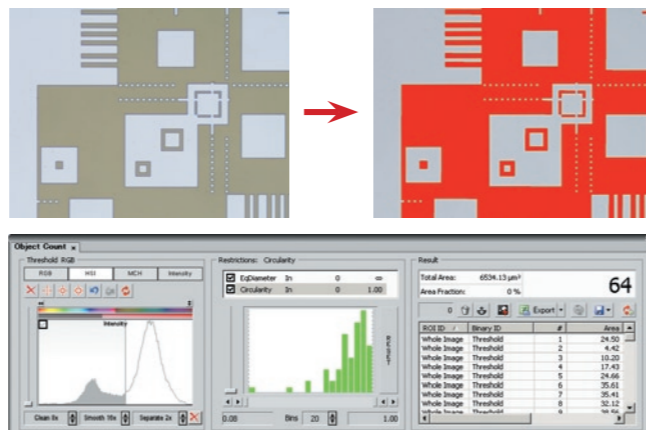


Selects the in-focus area and produces one all-in-focus image

### Auto measurement (Object Counting)

Ar Br Option D

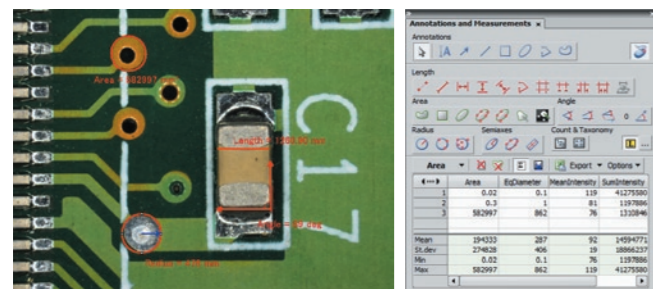
Performs binarization on images using previously set thresholds to measure the number, area, brightness, etc. of identified objects.



### Manual measurement and image annotation

Ar Br D

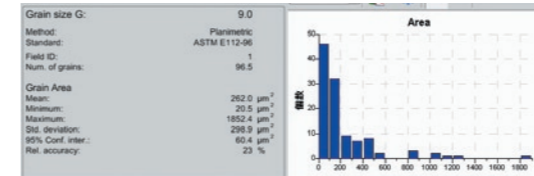
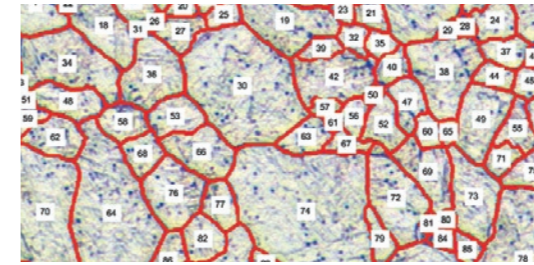
Manual Measurement allows easy measurement of length and area by drawing lines or an object directly on the image. The results can be attached to the image, and also exported as text or to an Excel spreadsheet.



### Grain size analysis

Option Ar Br D

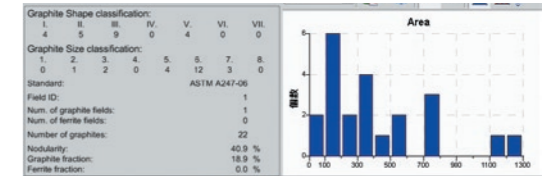
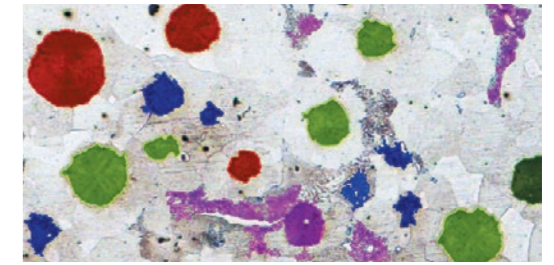
Detects and measures grains in one and two phase samples according to JIS G0551, ASTM E112-13/E1382-97, ISO643 and GB/T 6394 standards.



### Cast iron analysis

Option Ar Br D

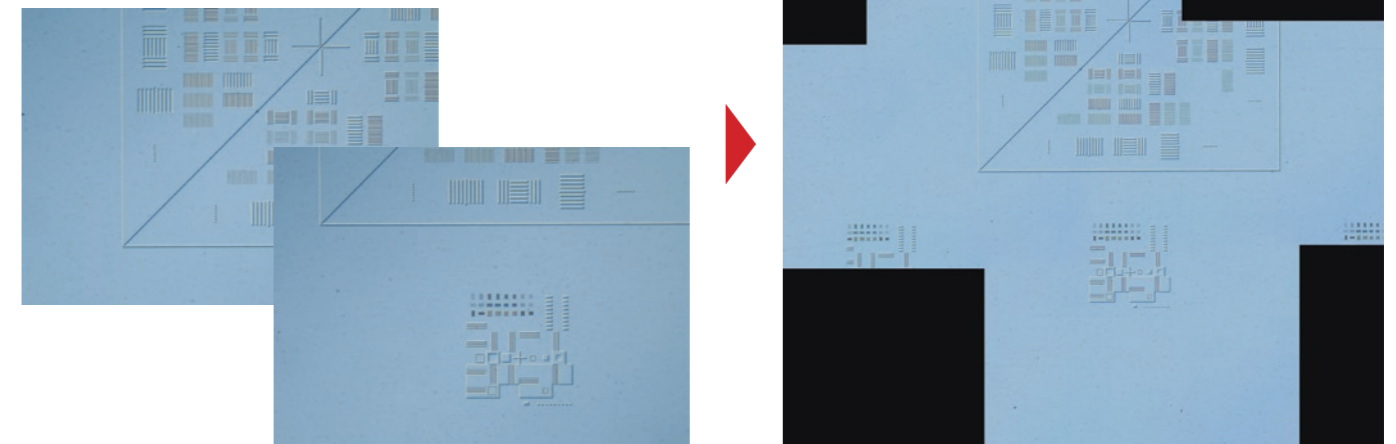
Detects, measures and classifies graphite content as well as ferrite content in graphite-corrected samples according to JIS G5502, ASTM A247-06 and ISO945-1 standards.



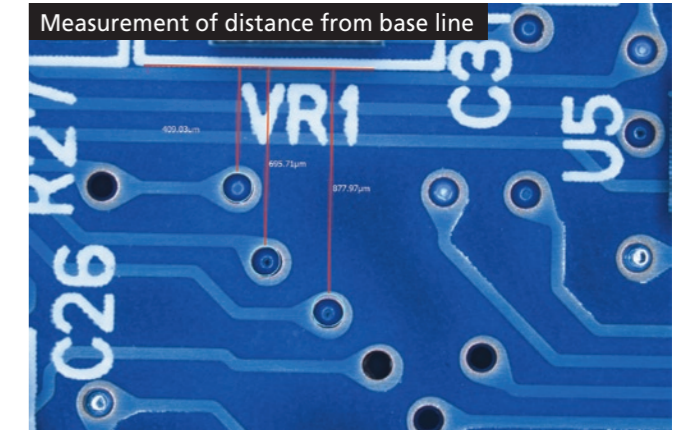
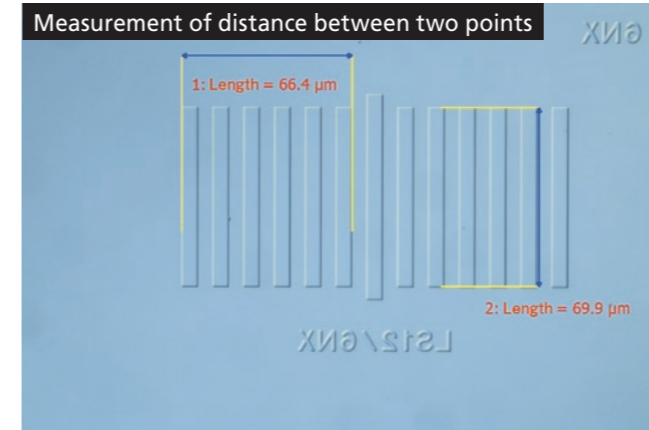
### Image stitching (Large Image)

Option Ar Br D

Stitches together images acquired from multiple fields of view. This can occur from images as they are acquired or from previously captured images.



### Measuring Software



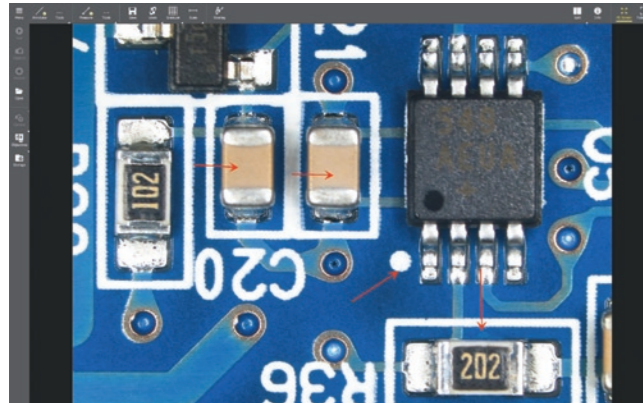
## Intuitive control of microscope cameras from tablet PCs

Easily view images and control image acquisition settings for the Digital Sight 1000/DS-Fi3/Digital Sight 10 camera on a tablet PC using NIS-Elements L.

(Compatible OS: Windows® 10 Pro) \* Nikon provides confirmed compatible tablet PCs with up-to-date specifications. Contact Nikon for details.

### User Interface for naturally simple operation

NIS-Elements L displays various menus for image capture, saving, display, measurement and annotations using intuitive icons. It also supports touch screen operation.



### A wide variety of tools

NIS-Elements L enables the conducting of simple measurements on images, with input of lines and comments. These can also be written onto and saved with the image, and measurement data can be output.

**Measurement function**

- Line distance
- Area
- Circle
- Circle distance
- Pitch distance
- Angle

**Annotate function**

- Line
- Arrow
- Text
- Marker
- Polyline

**Graticule/scale function**

Crosshairs	Grid
Simple crosshairs	Horizontal scale
Circle	Vertical scale

### Scene mode

Ten camera setting patterns for optimal color reproduction and contrast for each microscope light source, observation method and type of sample, as well as custom settings, can be selected.

#### Industrial Scene Mode

- Wafer/IC
- Metal
- Circuit board
- Flat Panel Display

### Other functions

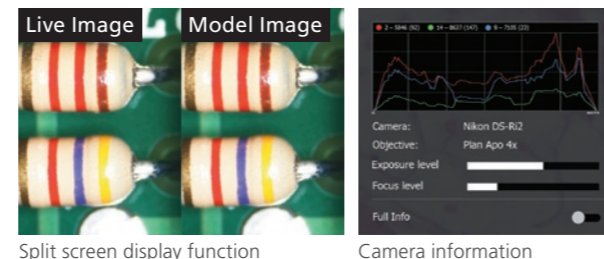
• **Split screen display:** A live image is displayed on the left side of the screen and the saved image is displayed on the right side. When synchronization is activated, synchronized magnification is applied to the both images.

• **Camera information:** A histogram and metadata of the image are displayed.

• **Full screen:** The image is displayed across the entire screen.

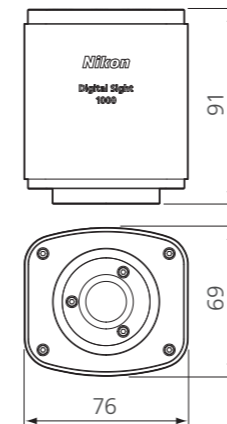
• **Saving:** The displayed image is saved with a new file name.

• **Live stream:** Easy live streaming to other PCs and mobile devices on the same network or via an Internet streaming services.



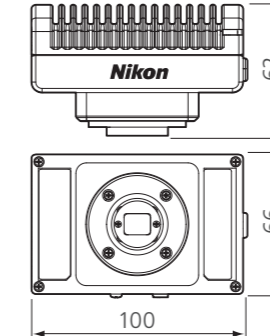
## Dimensions

### Digital Sight 1000



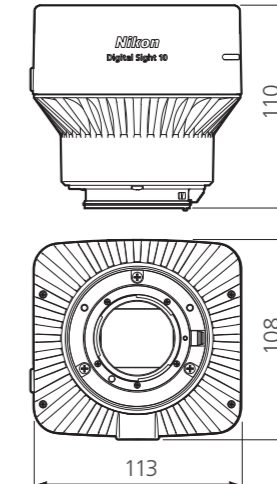
Weight: approx. 450 g

### DS-Fi3



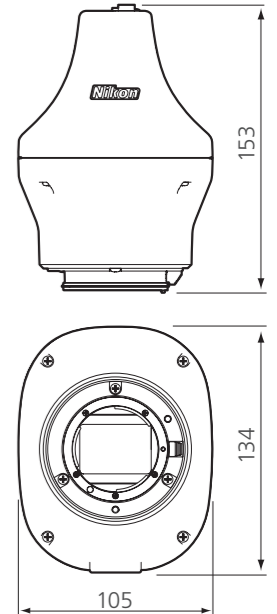
Weight: approx. 400 g

### Digital Sight 10



Weight: approx. 1,100 g

### DS-Qi2

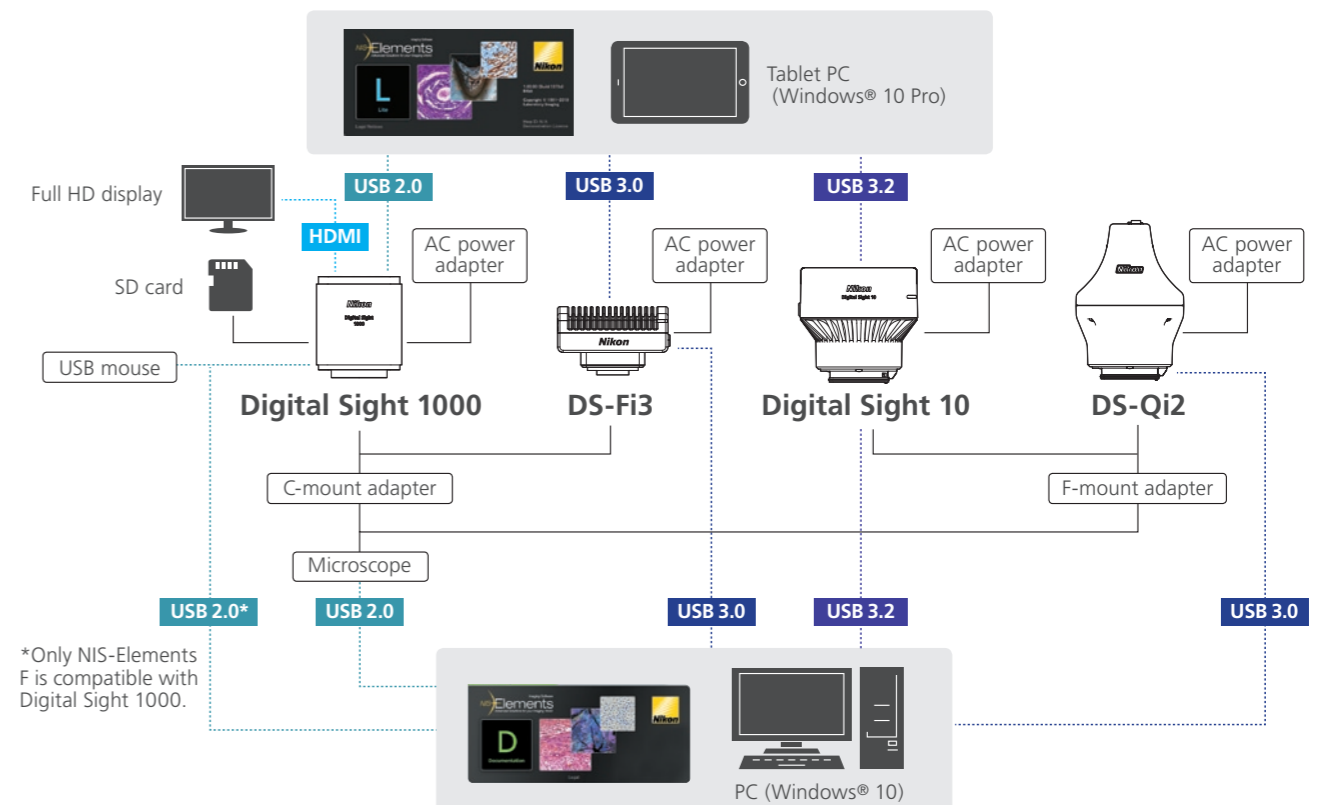


Weight: approx. 1,200 g

Digital Sight 10  
 Maintenance movie



## System Diagram



\*Only NIS-Elements F is compatible with Digital Sight 1000.

# Specifications

Model name	Digital Sight 1000	DS-Fi3	Digital Sight 10	DS-Qi2
Image sensor	1/2.8 inch Color CMOS image sensor Size: 5.57 × 3.13 mm	1/1.8 inch Color CMOS image sensor Size: 6.91 × 4.92 mm	Nikon FX-format Color/ Monochrome CMOS image sensor Size: 35.8 × 23.8 mm	Nikon FX-format Monochrome CMOS image sensor Size: 36.0 × 23.9 mm
Recordable pixels	1920 × 1080 pixels	All pixels: 2880 × 2048 2 Vertical and 2 horizontal pixels average: 1440 × 1024	6000 × 3984 pixels	All pixels: 4908 × 3264 3 × 3 pixels average: 1636 × 1088
Lens mount	C-mount		F-mount	
Cooling method	—			Electronic cooling
ISO sensitivity (recommended exposure index)	Standard: equivalent to ISO 150	Standard: equivalent to ISO 50 (Selectable from ISO 50 to ISO 3200 equivalent)	Equivalent to ISO 200 (color mode) Equivalent to ISO 800 (monochrome mode) (Selectable from ISO 125 to 8000 :in color / ISO 500 to 32000 in mono)	Standard: equivalent to ISO 800 (Selectable from ISO 800 to ISO 51200 equivalent)
Quantum efficiency	—			77%
Full well Capacity	—			60000e (- typ.)
Readout noise	—			2.2e (- typ.)
Dark current	—			0.6e-/p/s (Ta=25°C)(typ.)
Live display mode* (maximum fps)	1920 × 1080 pixels: 30 fps	All pixels (2880 × 2048): 15 fps 2 Vertical and 2 horizontal pixels average (1440 × 1024): 30 fps	All pixels (6000 × 3984): 9 fps FullHD 3x3 pixels average (1920x1080): 66 fps	All pixels (4908 × 3264): 6 fps 3 × 3 pixels average (1636 × 1088): 45 fps
Exposure time	1 m sec ~ 10 sec	100 µsec ~ 30 sec	100 µsec ~ 120 sec	
Photometry mode	Average photometry 1920 × 1080 pixels (all area)	Average photometry: Average intensity within the photometry area Peak photometry: Maximum intensity within the photometry area		
Exposure control	Automatic exposure, Manual exposure	One-time automatic exposure: Exposure time is adjusted automatically for one-time within the optimum range for the camera Continuous automatic exposure: Automatic exposure adjustment is performed continuously to keep the exposure within the camera Manual exposure: Exposure time and gain settings are made manually		
Exposure correction	Available	Average metering: ±1EV Step:1/6EV (some restrictions according to tone) Peak hold metering: -1 EV ~ ±0 EV		Average metering: -1 EV ~ +1/2 EV Peak hold metering: -1 EV ~ ±0 EV
Interface	USB2.0 (connect with PC or USB mouse) × 1, HDMI × 1, SD card slot x1**	USB3.0 (connect with PC) × 1, External trigger × 1	USB3.2GEN1,2 (connect with PC) × 1, External trigger × 1	USB 3.0 (connect with PC) × 1, External trigger × 1
Power supply	AC100-240V 50Hz/60Hz			
Power consumption	3 W	4.8 W	18 W	24 W
Operating environment	0-40°C, 60% RH max. (without condensation)			0-30 °C, 80% RH max. 30-40°C, 60% RH max. (without condensation)

\*Maximum frame rate depends on exposure time. \*\*Both SD and SDHC memory cards are compatible with the Digital Sight 1000 camera.

Specifications and equipment are subject to change without any notice or obligation on the part of the manufacturer. January 2022 ©2004-2022 NIKON CORPORATION  
Microsoft and Windows are registered trademarks of Microsoft Corporation in the United States and other countries. Company and product names listed in this brochure are trademarks or registered trademarks of each company.

N.B. Export of the products\* in this brochure is controlled under the Japanese Foreign Exchange and Foreign Trade Law. Appropriate export procedures shall be required in case of export from Japan.

\*Products: Hardware and its technical information (including software)

**WARNING** TO ENSURE CORRECT USAGE, READ THE CORRESPONDING MANUALS CAREFULLY BEFORE USING THE EQUIPMENT.



## NIKON CORPORATION

Shinagawa Intercity Tower C, 2-15-3, Konan, Minato-ku, Tokyo 108-6290, Japan  
phone: +81-3-6433-3701 fax: +81-3-6433-3784  
<https://www.nikon.com/products/industrial-metrology/>

ISO 14001 Certified  
for NIKON CORPORATION

ISO 9001 Certified  
for NIKON CORPORATION  
Industrial Metrology Business Unit

## NIKON METROLOGY EUROPE NV

Interleuvenlaan 86 B-3001 Leuven, Belgium  
phone: +32-16-74-01-00 fax: +32-16-74-01-03  
E-mail: [Sales.Europe.NM@nikon.com](mailto:Sales.Europe.NM@nikon.com)  
<http://www.nikonmetrology.com/en-gb>

## NIKON METROLOGY UK LTD.

UNITED KINGDOM phone: +44-1332-811-349 fax: +44-1332-639-881  
E-mail: [Sales.UK.NM@nikon.com](mailto:Sales.UK.NM@nikon.com)

## NIKON METROLOGY SARL

FRANCE phone: +33-1-60-86-09-76 fax: +33-1-60-86-57-35  
E-mail: [Sales.France.NM@nikon.com](mailto:Sales.France.NM@nikon.com)

## NIKON METROLOGY GMBH

GERMANY phone: +49-211-45-44-69-51  
E-mail: [Sales.Germany.NM@nikon.com](mailto:Sales.Germany.NM@nikon.com)

## NIKON INSTRUMENTS S.p.A.

ITALY phone: +39-055-300-96-01 fax: +39-055-30-09-93

## NIKON METROLOGY, INC.

12701 Grand River Road, Brighton, MI 48116 U.S.A.  
phone: +1-810-220-4360 fax: +1-810-220-4300  
E-mail: [Sales.NM-US@nikon.com](mailto:Sales.NM-US@nikon.com)  
<http://www.nikonmetrology.com/en-us>

## NIKON METROLOGY - MEXICO

MEXICO phone: +52-442-688-5067  
E-mail: [Sales.NM-MX@nikon.com](mailto:Sales.NM-MX@nikon.com)

## NIKON INSTRUMENTS (SHANGHAI) CO., LTD.

CHINA (Shanghai branch) phone: +86-21-6841-2050 fax: +86-21-6841-2060  
(Beijing branch) phone: +86-10-5831-2028 fax: +86-10-5831-2026  
(Guangzhou branch) phone: +86-20-3882-0551 fax: +86-20-3882-0580

## NIKON INSTRUMENTS KOREA CO., LTD.

KOREA phone: +82-2-2186-8400 fax: +82-2-555-4415

## NIKON SINGAPORE PTE. LTD.

SINGAPORE phone: +65-6559-3651 fax: +65-6559-3668  
E-mail: [NSG.Industrial-sales@nikon.com](mailto:NSG.Industrial-sales@nikon.com)

## PT. NIKON INDONESIA

INDONESIA phone: +62-267-864-3949 fax: +62-267-864-3950

E-mail: [PTN.Instruments@nikon.com](mailto:PTN.Instruments@nikon.com)

## NIKON SALES (THAILAND) CO., LTD.

THAILAND phone: +66-2633-5100 fax: +66-2633-5191